

Head of SEND Services

Corporate:

Lead – SEND, Inclusion & AP Strategy
LANO – Local Area Nominated Officer
Joint Lead Transitions

Our services working together to be inclusive

Delivering Better Value (DBV)
Change Partnership Programme (CPP)
Childrens Services Leadership Team (CSLT)
Education, Inclusion and Skills Leadership Team (EISL)

Partnerships

SENDi *AP Responsible Officers
SEND Strategic Partnership Board
SEND Executive Board
Travel Board
Swindon SEND Families Voice
Health and Wellbeing Board
Learning Disability Partnership



Statutory SEND

- Assessment Hub
- Reviewing Hub – North
- Reviewing Hub – South
- Reviewing Hub – PFA
- Supported Employment Team

SEND Operations Team

- Systems and Development
- Finance
- Learning & Development
- Quality Assurance
- Policy & Performance
- Local Offer

Educational Psychology Service

- Statutory and Core work
- Traded work with schools including ELSA programme
- Commissioned work with Health (NDC Pathway and Cygnet)

SEND Travel Team

- Travel Hub – North
- Travel Hub – South
- Independent Travel Hub
- Passenger Transport Assistants
- Personal Travel Budgets

SEND Service – Statutory Team

Statutory SEND Service Manager Roxanne Lucas (Interim)

Review Team (North)

Team Leader
Jorge Betteridge (Interim)

EHCP Coordinators (Review)

Claire Chapman
Emily Varney
Lisa Legg
Megan Jones
(vacancy x 2)

EHCP Coordinator (Assessment)

Annabel Titcombe
Leah Lewis

Delivery Support Officer
(vacant)

Review Team (South)

Team Leader
Keri Niblett

EHCP Coordinators (Review)

Beth McKitterick
Lauren Southgate
Emma Skudlarz
Maxine Reid
Jessica Hopewell
Hannah Garraway
(vacancy)

EHCP Coordinator (Assessment)

Karen Barnard

Delivery Support Officer
Sally Franklin

Review Team (PfA)

Team Leader
Mine Essen (Interim)

EHCP Coordinators (review)

Neil Marshall
Debbie Garraway
Melissa Nembhard (agency)
(vacancy x2)

Delivery Support Officer
Helen Castle

Supported Employment Team (SET)

Team Leader
Auriel Chandarana

Supported Employment Co-ordinators

Deborah Reeves
Francesca Farone
Nicole Wales

SEND Service Front Door - Telephone line: 01793 464641, SEND Service Inbox: SENDSERVICE@swindon.gov.uk
Annual Review paperwork submission only: AnnualReviews@swindon.gov.uk

SEND Service – SEND Operations Team (1)

SEND Operations Manager
(vacant)

Programme Manager
Andrew Orr

**Workforce Development
&
Local Offer**

**SEND Inclusion and
Training Officer**
Rachel Mann

**Local Offer Development
Officer**
Andrew Myrie

**Quality Assurance and
Finance**
Quality Assurance Officer
Hannah Geddert

**Policy and Performance
Officer**
Emily King

**SEND Finance and
Personal Budgets Officers**
Lisa Silva
(Vacancy x1.6)

SEND Apprentice
Millie Garland

**Delivery and Systems
Team Leader**
(vacant)

**SEND Operations
Delivery Support Officer**
(vacant)

**Contracts & Procurement
Officer**
Sandyp Singh

Travel Teams
(see next chart)

**SEND Service Front Door - Telephone line: 01793 464641, SEND Service Inbox: SENDService@swindon.gov.uk
Local Offer Inbox: LocalOffer@swindon.gov.uk**

SEND Service – SEND Operations Team (2)

Travel Senior Officer

Louise Tutt

Contracts and Procurement Officer

Sandyp Singh

Independent Travel Hub

Team Leader
Roger Haworth

Travel Coordinators

Tyler Gunn
(vacancy)

Travel Assistant
(Vacancy x2)

Travel North Hub

Team Leader
Kerry Cope

Travel Coordinators

Justine Doidge
Carrie Tipping

Travel Assistant
(vacancy)

Travel Apprentice
Kieran Nelson

Passenger Assistants
Approx 50 working in the community

Travel South Hub

Team Leader
Suzanna Wozniak

Travel Coordinators

Oana Persicov
Pam Eddy/Yvonne Mundy

Travel Assistant
Alex Edwards

Travel Apprentice
Beth French

Passenger Assistants
Approx 50 working in the community

North Hub Phone: 01793 464165, Email Inbox – TravelNorth@swindon.gov.uk

South Hub Phone: 01793 464166, Email Inbox – TravelSouth@swindon.gov.uk

Independent Travel Hub Phone: 01793 464167, Email Inbox – IndependentTravel@swindon.gov.uk

SEND Service – Educational Psychology Service

Principal Educational Psychologist

Alexa Denham

Deputy Principal Educational Psychologist

Suzanne Horgan

Educational Psychologists

Dr Catherine Hastings
Lucy Walshe (Locum)
David Wright (Locum)

Advisory Teachers for Cognition & Learning (C&L)

Rachel Williams
Lisa Tew

Business Support

Pilar Ruiz
Rose Sharman

Educational Psychologists

Jacob (Jake) Fox
Jamie Rowley
Dr Sophie Lobley
Dr Susan Pollock
Jo Hammond (Locum)

Trainee Educational Psychologist

Luca Onions

Senior Educational Psychologist

Dr Liz Bishop (Interim)

Educational Psychologists

Chizzy Chapman
Amanda Hayllar
Eloise de Carvalho
(vacancy)

Assistant Educational Psychologists

Bethany Thomson
Caroline Davis

Trainee Educational Psychologist

Iona Watt

Senior Educational Psychologist

Dr Pauline Cooper

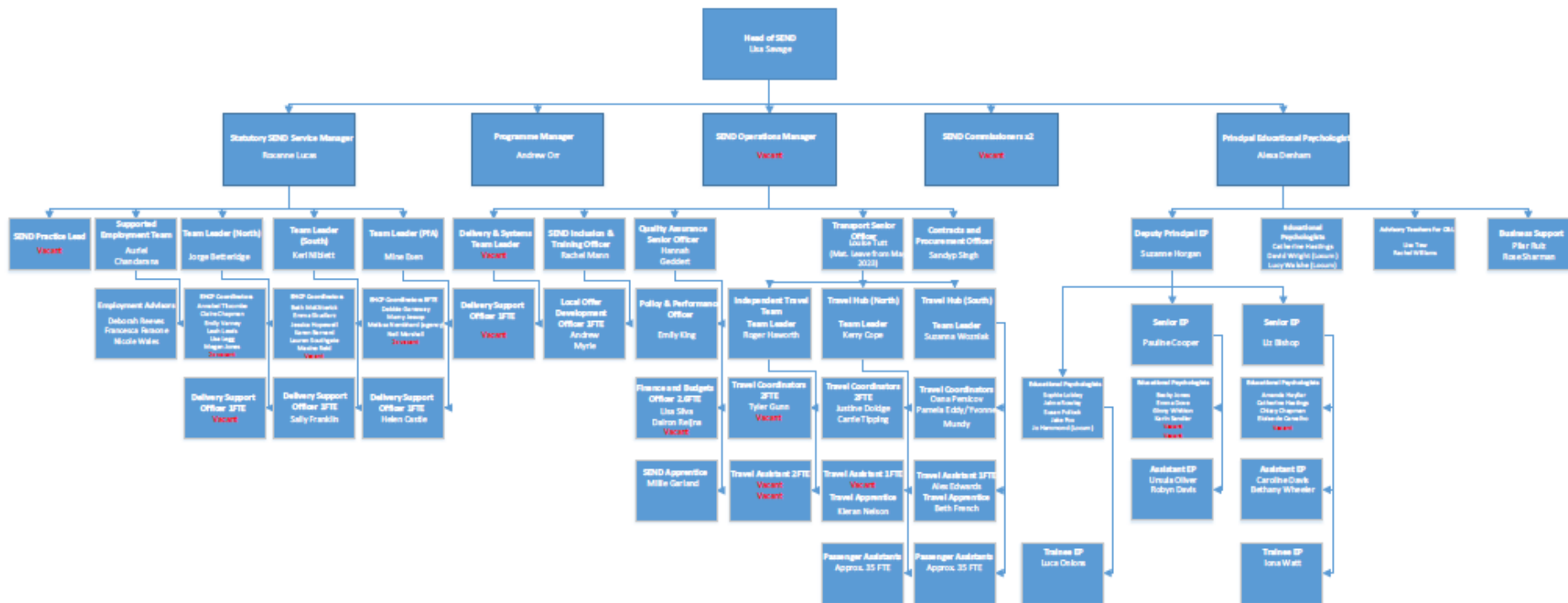
Educational Psychologists

Rebecca (Becky) Jones
Emma Dove
Ginny Whitton
Dr Karin Sandler
(vacancy x 2)

Assistant Educational Psychologists

Robyn Davis
Ursula Oliver

Educational Psychology Team – Central Phone Line: 07392 109910
Educational Psychology Email Inbox - epsenquiries@swindon.gov.uk



Contact details for the service

The SEND Service operates a shared 'front door' for the Statutory and Operations Teams. The contact details are:

- Telephone: 01793 464641
- Email: SENDSERVICE@swindon.gov.uk

The Travel Team Hubs can be contacted as follows:

- North Hub – Telephone: 01793 464165, Email: TravelNorth@swindon.gov.uk
- South Hub – Telephone: 01793 464166, Email: TravelSouth@swindon.gov.uk
- Independent Travel Hub – Telephone: 01793 464167, email IndependentTravel@swindon.gov.uk

The Educational Psychology Team can be contacted as follows:

- Telephone: 07392 109910 (Business Support)
- Email: epsenquiries@swindon.gov.uk