

Models of Participation

Swindon will be working with two models of participation over the next three years. These models will serve different purposes to ensure we can drive forward innovative participation practice.

Lundy Model of Participation (2007)

The Lundy Model of Participation will support professionals from across the Borough in their direct support of children, young people and families' participation. It provides clear parameters and conditions for successful participation to ensure that the voices of our children, young people and families can be heard.



- **SPACE:** Children must be given safe, inclusive opportunities to form and express their view
- **VOICE:** Children must be facilitated to express their view
- **AUDIENCE:** The view must be listened to
- **INFLUENCE:** The view must be acted upon, as appropriate

Fig 1 Lundy, L. (2007)

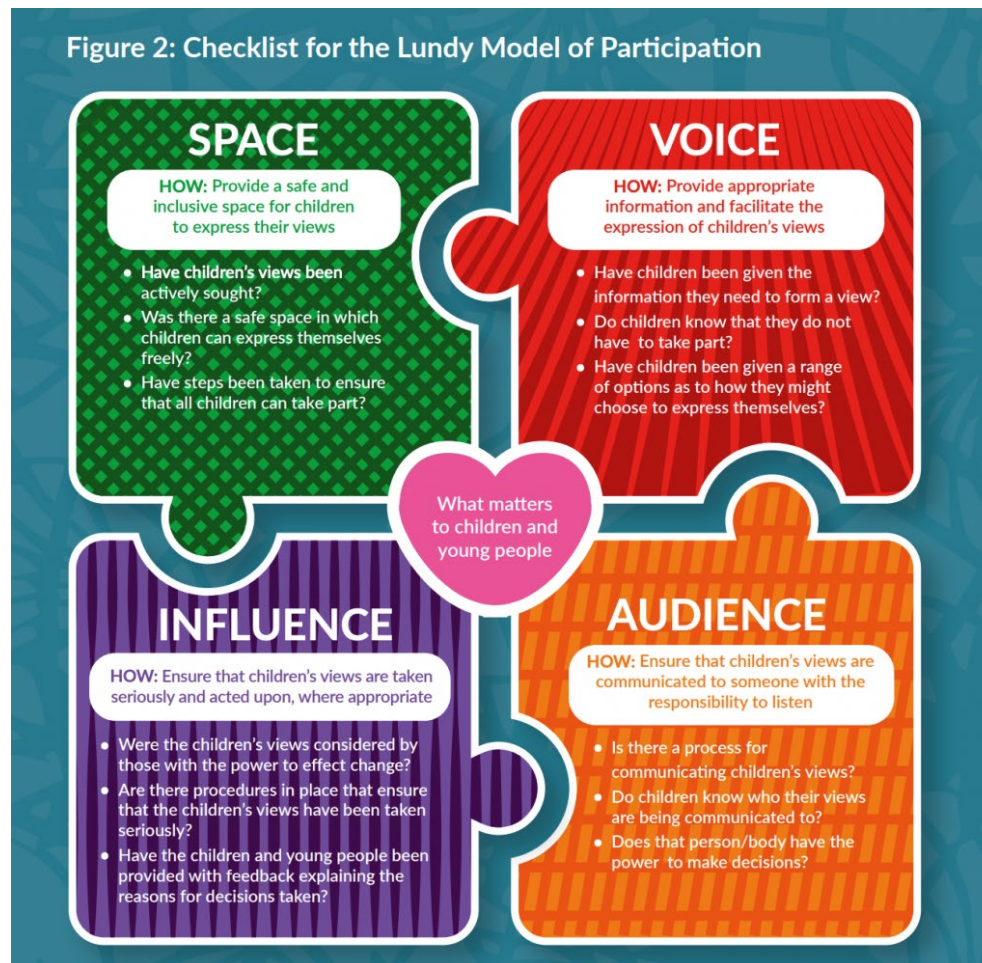


Fig 2 Lundy, L. (2007)

Slay and Penny's Model of Participation (2014)

Slay and Penny's model will be utilised by organisations across Swindon who work with our children, young people and families on a more strategic level. It forms the basis for the self-assessment tool, which organisations across Swindon will use to rate their levels of participation, set objectives and write action plans for

improvement. We want all services/organisations to be aspirational and aim for co-design and co-production on the ladder, with a minimum expectation of working at engagement level.

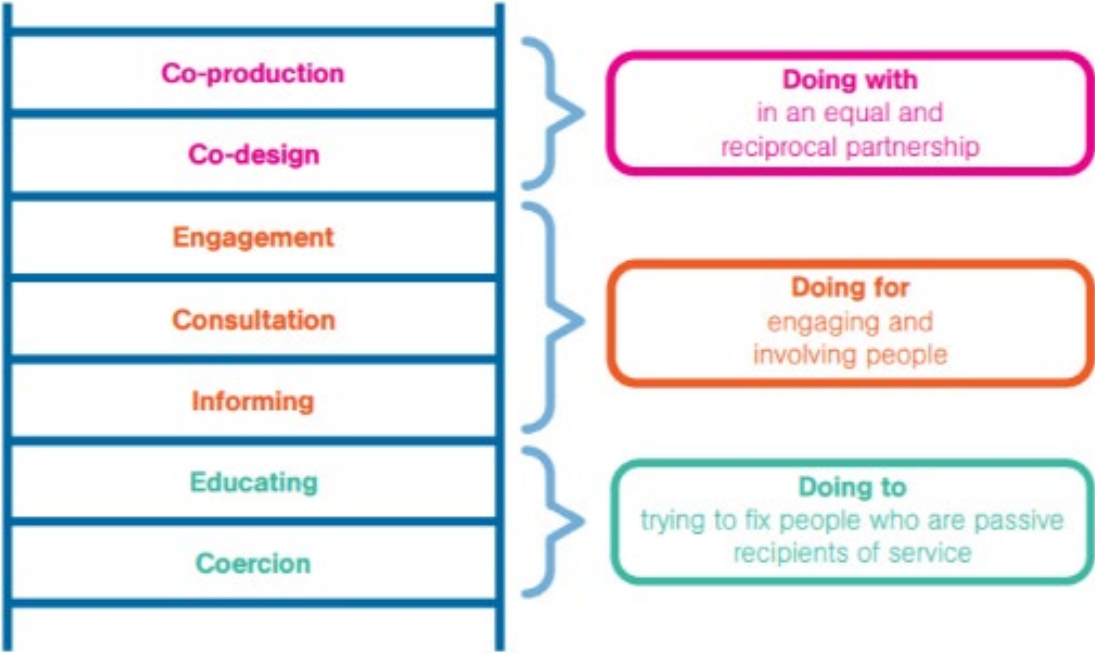


Fig 3 Slay, J. & Penny, J. (2014)