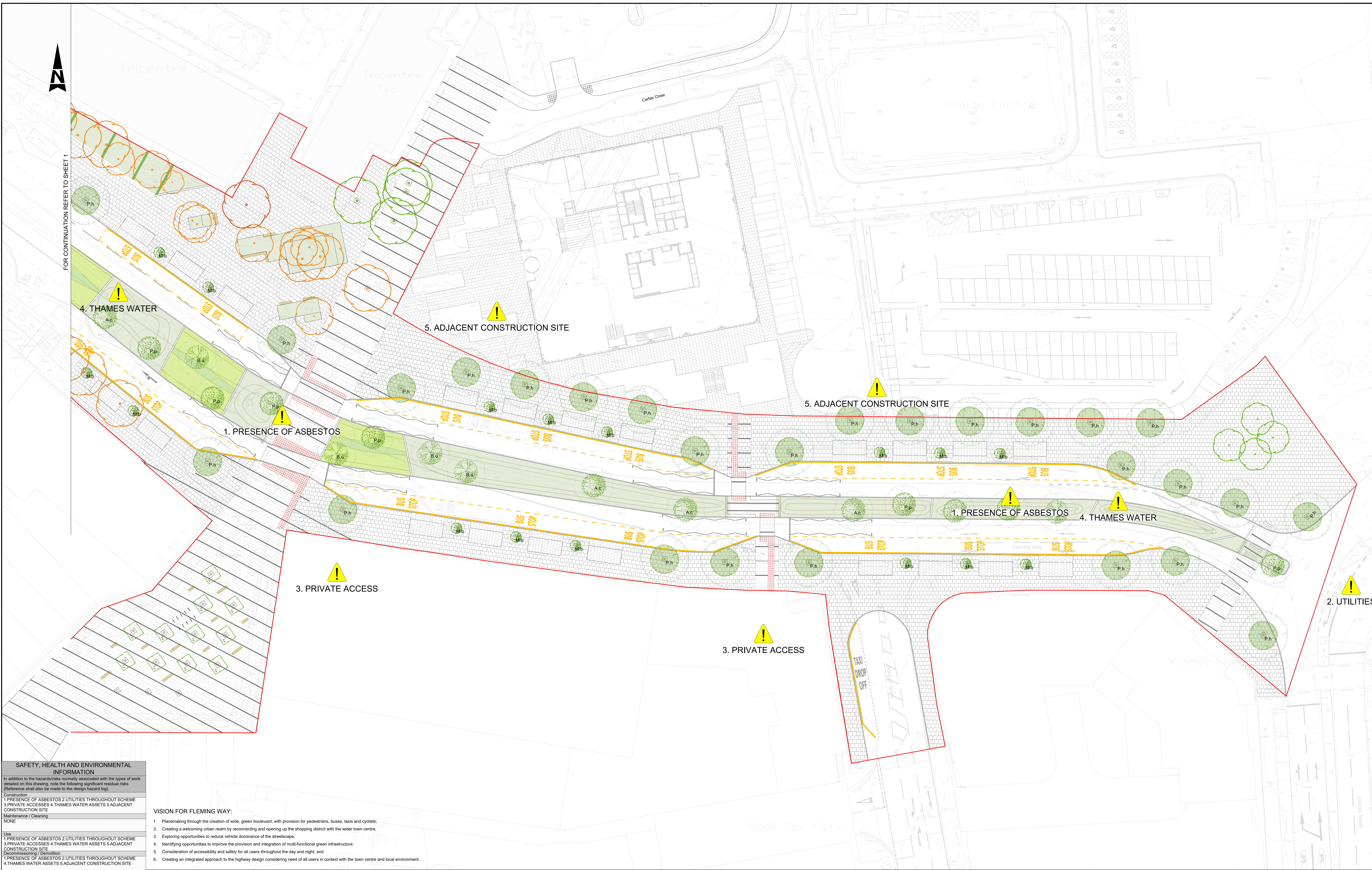




FOR CONTINUATION REFER TO SHEET 1



SAFETY, HEALTH AND ENVIRONMENTAL INFORMATION	
In addition to the hazards/risks normally associated with the types of work detailed on this drawing, note the following significant residual risks (Reference shall also be made to the design hazard log).	
Construction	
1. PRESENCE OF ASBESTOS 2. UTILITIES THROUGHOUT SCHEME	
3. PRIVATE ACCESS 4. THAMES WATER ASSETS 5. ADJACENT CONSTRUCTION SITE	
Maintenance / Cleaning	
NONE	
Use	
1. PRESENCE OF ASBESTOS 2. UTILITIES THROUGHOUT SCHEME	
3. PRIVATE ACCESS 4. THAMES WATER ASSETS 5. ADJACENT CONSTRUCTION SITE	
Decommissioning / Demolition	
1. PRESENCE OF ASBESTOS 2. UTILITIES THROUGHOUT SCHEME	
4. THAMES WATER ASSETS 5. ADJACENT CONSTRUCTION SITE	

VISION FOR FLEMING WAY:

- Placemaking through the creation of wide, green boulevard, with provision for pedestrians, buses, taxis and cyclists;
- Creating a welcoming urban realm by reconnecting and opening up the shopping district with the wider town centre;
- Exploring opportunities to reduce vehicle dominance of the streetscape;
- Identifying opportunities to improve the provision and integration of multi-functional green infrastructure;
- Consideration of accessibility and safety for all users throughout the day and night; and
- Creating an integrated approach to the highway design considering need of all users in context with the town centre and local environment.

NOTES:	
1. DO NOT SCALE FROM THIS DRAWING.	
2. BUS SHELTERS ARE SHOWN INDICATIVELY. BUS SHELTER TYPE AND DIMENSIONS TO BE AGREED WITH SWINDON BOROUGH COUNCIL.	
3. FOR CROSS SECTIONS, REFER TO DRAWING: FWB BLVD-ATK-HML-FWML-DR-CH-000002 AND FWB BLVD-ATK-HML-FWML-DR-CH-000003.	
4. FOR PLAN & PROFILE, REFER TO DRAWING: FWB BLVD-ATK-HML-FWML-DR-CH-000001.	
5. FOR DETAILED CROSS SECTIONS, REFER TO DRAWING: FWB BLVD-ATK-HML-FWML-DR-CH-000004 TO FWB BLVD-ATK-HML-FWML-DR-CH-000007.	
6. FOR KERB & FOOTWAY, REFER TO DRAWING: FWB BLVD-ATK-HKF-FWML-DR-CH-000001.	
7. FOR TRAFFIC SIGNS, REFER TO DRAWING: FWB BLVD-ATK-HSN-FWML-DR-CH-000001.	
8. THE PAVING IS SHOWN INDICATIVELY. IT DOES NOT REFLECT THE FINAL DESIGN.	
9. AN ARBORICULTURE IMPACT ASSESSMENT HAS BEEN UNDERTAKEN IN NOVEMBER 2019. REFER TO DOCUMENT REFERENCE: FWB BLVD-ATK-EGN-XX-RP-LL-000001	

GENERAL ARRANGEMENT KEY	
	Scheme Red Line Boundary
	Bus Shelter Indicative location
	Raised planters to accommodate existing trees
	Raised planter with 300mm thick retaining wall

HARDWORKS	
	Large-unit size granite dark tone paving
	Large-unit size granite medium tone paving
	Large-unit size granite light tone paving
	Dark tone paving banding in light tone granite
	Cycleway - Coloured asphalt
	Bench Seating - Concrete wall (450mm high) with timber slat cladding.

SOFTWORKS	
	Resin bound aggregate tree surround.
	Existing trees to be retained.
	Existing trees at risk of removal.
	Existing trees to be removed.
	Proposed Sustainable Drainage System (SuDS) planting: perennials and grasses in Rain Gardens
	Proposed SuDS: shrubs, perennials and grasses in Bioretention Swales
	Perennial hedgerow

SOFTWORKS	
	Proposed Sustainable Drainage System (SuDS) - Bioretention Swales
	Proposed Sustainable Drainage System (SuDS) - Rain Gardens
	Proposed Boulevard Trees (canopy size shown at 10 years after planting)
	Platanus x hispanica 'Tremontii' (Ultimate canopy size = 10m)
	Prunus 'Spire' (Ultimate canopy size = 5m)
	Malus baccata 'Street Parade' (Ultimate canopy size = 4m)

SOFTWORKS	
	Proposed Green Spine Trees (canopy size shown at 5 year after planting)
	Alnus cordata (Ultimate canopy size = 8m)
	Betula utilis var. jacquemontii (Ultimate canopy size = 8m)
	Prunus padus (Ultimate canopy size = 8m)
	Tilia platyphyllos with 2m clear stem and a flat pleached frame (Ultimate canopy size 3m wide by 3m length)

Description							
Status	Revision	Drawn	Checked	Reviewed	Authorised	Issue Date	
Description							
Status	Revision	Drawn	Checked	Reviewed	Authorised	Issue Date	
Description							
Status	Revision	Drawn	Checked	Reviewed	Authorised	Issue Date	
Description							
Status	Revision	Drawn	Checked	Reviewed	Authorised	Issue Date	
Description							
Description: First Issue							
SZ	Revision P01	Drawn MDS	Checked LD	Reviewed MA	Authorised —	Issue Date 13/01/20	

FOR INFORMATION		Status	Project Title
S2			Fleming Way Bus Boulevard
ATKINS		Drawing Title	
Member of the SNC-Lavalin Group		Landscape General Arrangement	
Copyright © Atkins Limited (2018)		Drawing Number	
Client		FWB Blvd - ATK - ELS - XXML	
Originator		- DR - LL - 000003	
Location		Type	
Original Size: A0		Scale: 1:250	
Project Ref No: 9167597		Sheet: 3 of 3	
Rev: P01			