

# Early Help Equalities Monitoring

## Headlines for Quarter 2 15/16:

### Compliance

- > 2 children have not had gender recorded in Q2.
- > Ethnicity recording on new involvements has increased again in Q2 and is now 4.7ppts higher than it was in Q4 14/15.
- > Religion recording remains too low to be able to draw any conclusions from the data.
- > Disability recording remains steady at around 28/29%. *NB: Caution should be taken with these figures - the list of disabled children and whether or not the disability was recorded was taken from Capita One and the Disabled Childrens Database Oct 2013. The latter is currently awaiting a refresh.*

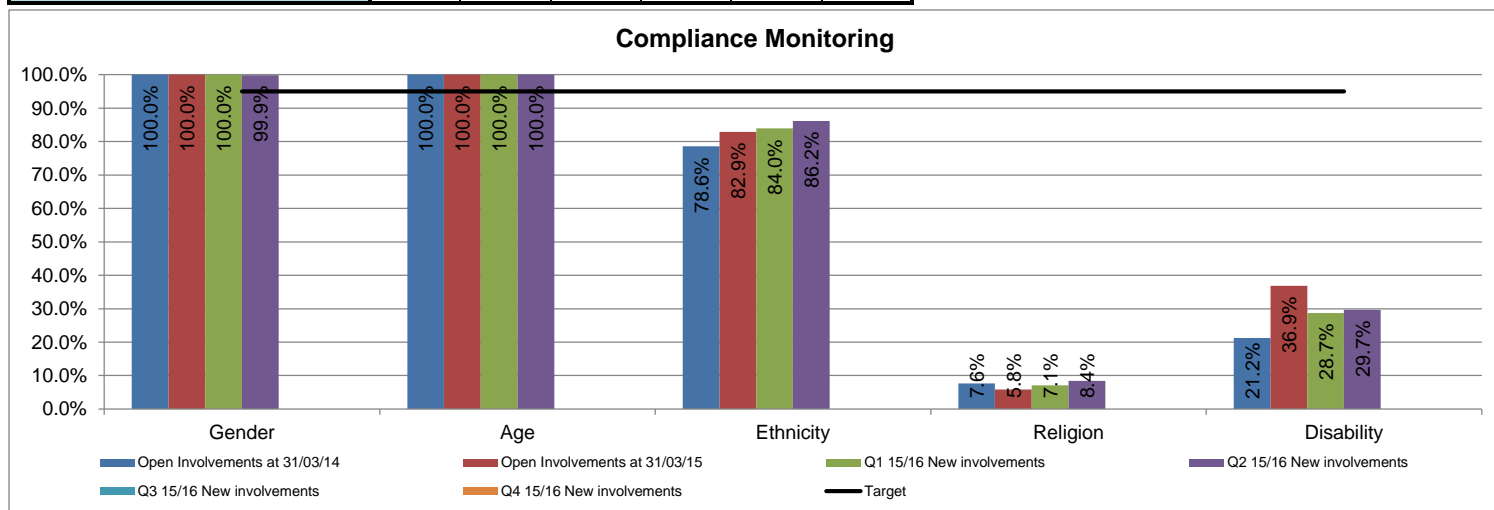
### Population

- > The gender split remains fairly consistent for new involvements, with boys always having the higher percentage.
- > New involvements with each age group remain consistent with each having a similar proportion of the total (around 20%), and the 16-18 age group having around 5 or 6%.
- > Ethnic groups consistently under-represented in open and new involvements compared to the Swindon under 18 population are: Asian Bangladeshi, Asian Pakistani, Black African, Chinese, Mixed White & Asian, Mixed White & Black Caribbean and White British.
- > Ethnic groups consistently over-represented compared to the Swindon under 18 population are: Black Other, Mixed Other, Other Ethnic Group and White Other.
- > New involvements with disabled children has remained the same at 5.9%.

### Compliance:

Of children with ≥1 involvement, % who have...	OI 31/03/14	OI 31/03/15	Q1 15/16 NI	Q2 15/16 NI	Q3 15/16 NI	Q4 15/16 NI
gender recorded	100.0%	100.0%	100.0%	99.9%		
DOB recorded	100.0%	100.0%	100.0%	100.0%		
ethnicity recorded	78.6%	82.9%	84.0%	86.2%		
religion recorded	7.6%	5.8%	7.1%	8.4%		
disability recorded <sup>1</sup>	21.2%	36.9%	28.7%	29.7%		
(no. disabled children with ≥1 involvement)	1019	1541	188	158		
<b>No. children with ≥1 involvement</b>	<b>17310</b>	<b>21545</b>	<b>3161</b>	<b>2681</b>		

Notes
OI 31/03/yy: All open involvements, with children aged under 18, as at 31/03/yyyy
Qx 15/16 NI: New involvements opened within the quarter
<sup>1</sup> of disabled children with an involvement, how many have a disability recorded



### A note on sexual orientation and gender identity monitoring:

Due to the nature of child development and the sensitivities around sexual expression, sexual orientation and gender identity, we will not regularly monitor and report against these categories in our work with Children, Families and Community Health. We will, through the equality development plan, find means to talk with, listen to and understand the needs and experiences of children, young people and families relating to sexual orientation and gender identity is a concern.

# Early Help Equalities Monitoring

## Population:

Pop (Population) - Overall Swindon population figures are for under 18s only. Taken from 2011 population census.

OI - Any child age 0-18 with at least one open involvement across all Early Help services as at 31/03/yyyy

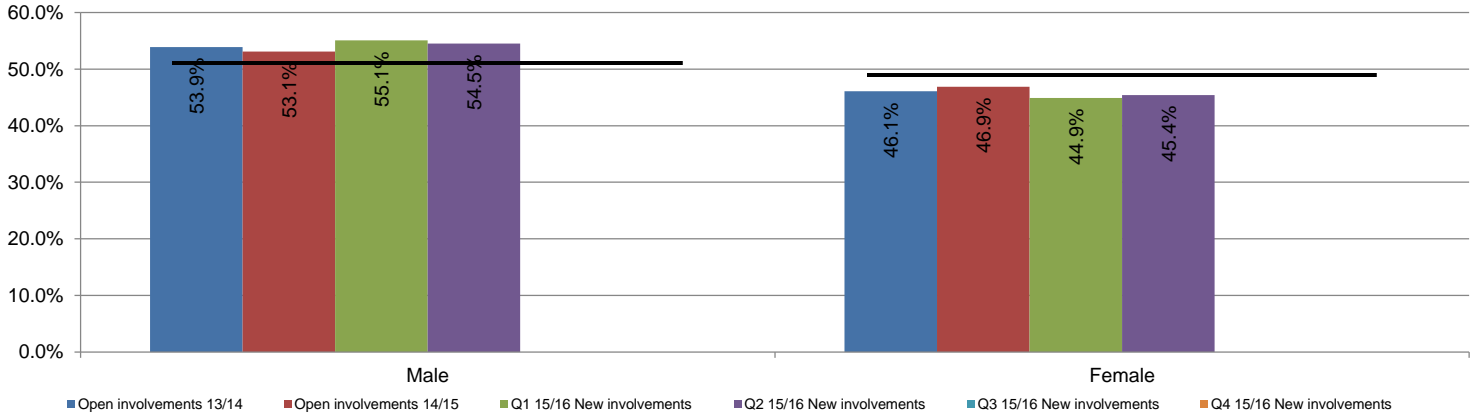
NI - Any child age 0-18 with at least one new involvement across all Early Help services in the 15/16 quarter

Diff (Difference) - OI or NI figure minus Pop figure

For all following graphs this line shows the total Swindon under 18 population from the 2011 population census.

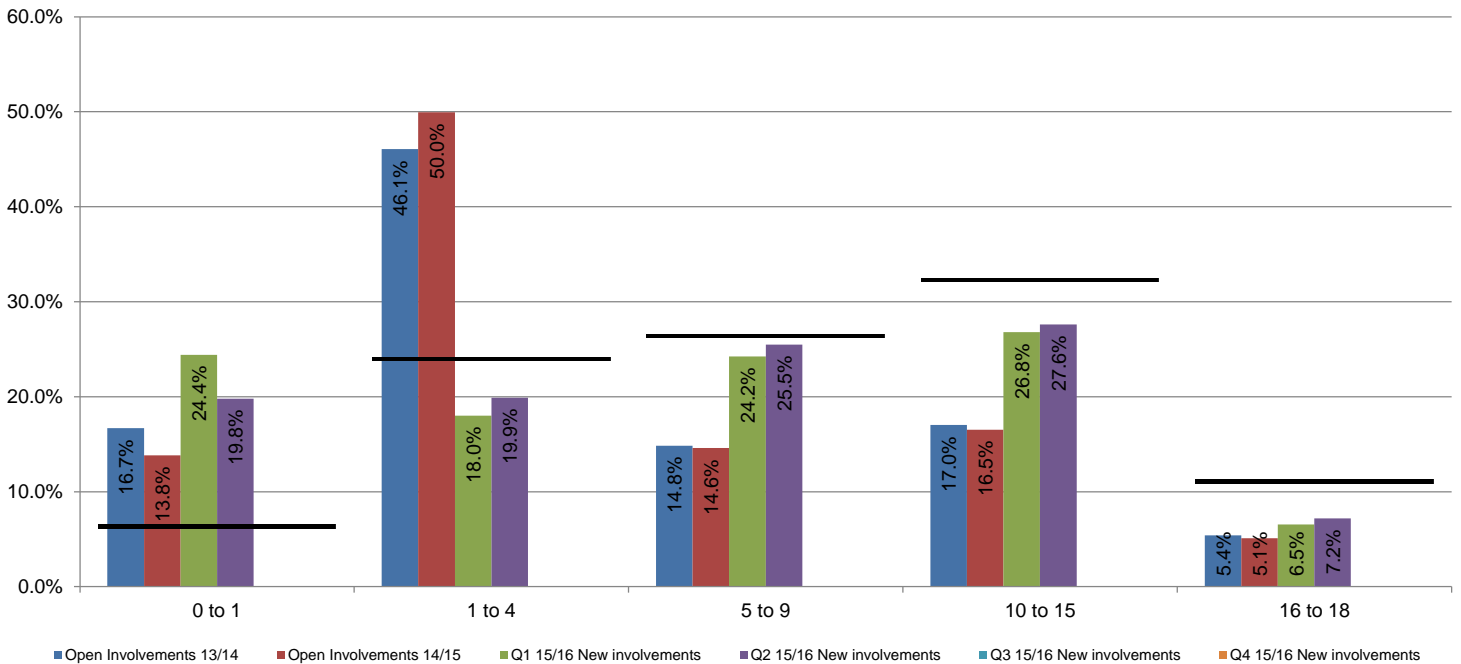
Gender													
	Pop	OI 13/14		OI 14/15		Q1 15/16 NI		Q2 15/16 NI		Q3 15/16 NI		Q4 15/16 NI	
		OI	Diff	OI	Diff	NI	Diff	NI	Diff	NI	Diff	NI	Diff
Male	51.1%	53.9%	2.8%	53.1%	2.0%	55.1%	4.0%	54.5%	3.4%				
Female	48.9%	46.1%	-2.8%	46.9%	-2.0%	44.9%	-4.0%	45.4%	-3.5%				

**Gender Breakdown: Early help involvements open year end and new in the quarter compared with Swindon under 18 population**



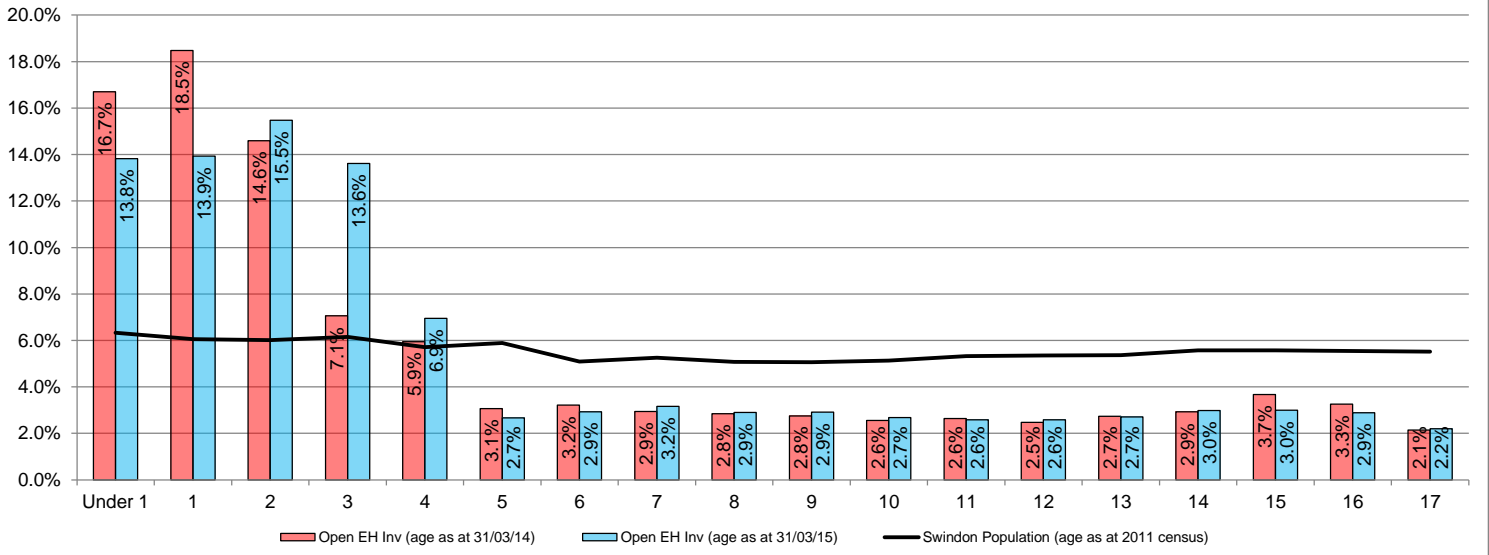
Age (as at last day of quarter)													
	Pop	OI 13/14		OI 14/15		Q1 15/16 NI		Q2 15/16 NI		Q3 15/16 NI		Q4 15/16 NI	
		OI	Diff	OI	Diff	NI	Diff	NI	Diff	NI	Diff	NI	Diff
0 to 1	6.3%	16.7%	10.4%	13.8%	7.5%	24.4%	18.1%	19.8%	13.5%				
1 to 4	23.9%	46.1%	22.1%	50.0%	26.0%	18.0%	-5.9%	19.9%	-4.0%				
5 to 9	26.4%	14.8%	-11.6%	14.6%	-11.8%	24.2%	-2.1%	25.5%	-0.9%				
10 to 15	32.3%	17.0%	-15.3%	16.5%	-15.8%	26.8%	-5.5%	27.6%	-4.7%				
16 to 18	11.1%	5.4%	-5.7%	5.1%	-6.0%	6.5%	-4.5%	7.2%	-3.9%				

**Age Breakdown: Early help involvements open year end and new in the quarter compared with Swindon under 18 population**



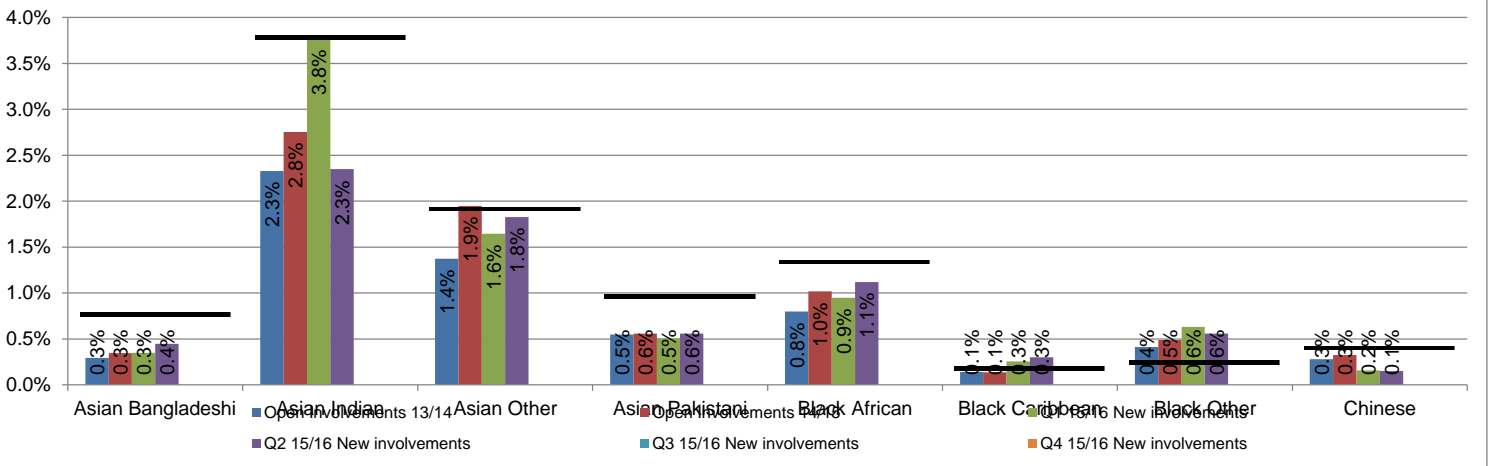
## Early Help Equalities Monitoring

### Age by single year: Open Early Help involvements as at 31/03/yyyy compared with Swindon population - Annual Snapshot



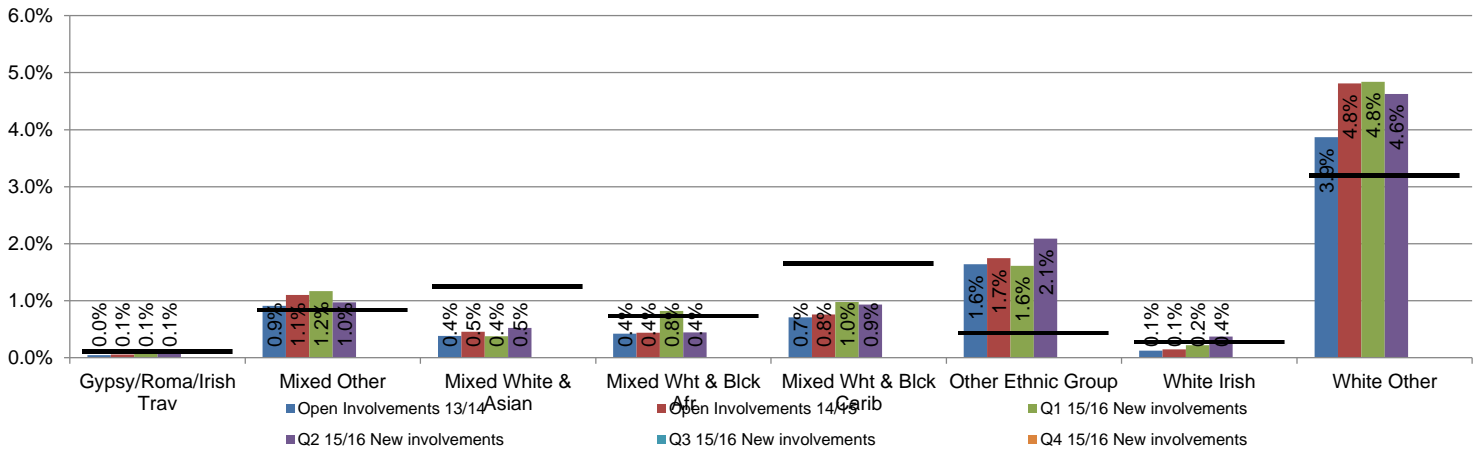
Ethnicity													
	Pop	OI 13/14		OI 14/15		Q1 15/16 NI		Q2 15/16 NI		Q3 15/16 NI		Q4 15/16 NI	
		OI	Diff	OI	Diff	NI	Diff	NI	Diff	NI	Diff	NI	Diff
Asian Bangladeshi	0.8%	0.3%	-0.5%	0.3%	-0.4%	0.3%	-0.4%	0.4%	-0.3%				
Asian Indian	3.8%	2.3%	-1.5%	2.8%	-1.0%	3.8%	0.0%	2.3%	-1.4%				
Asian Other	1.9%	1.4%	-0.5%	1.9%	0.0%	1.6%	-0.3%	1.8%	-0.1%				
Asian Pakistani	1.0%	0.5%	-0.4%	0.6%	-0.4%	0.5%	-0.5%	0.6%	-0.4%				
Black African	1.3%	0.8%	-0.5%	1.0%	-0.3%	0.9%	-0.4%	1.1%	-0.2%				
Black Caribbean	0.2%	0.1%	0.0%	0.1%	0.0%	0.3%	0.1%	0.3%	0.1%				
Black Other	0.2%	0.4%	0.2%	0.5%	0.2%	0.6%	0.4%	0.6%	0.3%				
Chinese	0.4%	0.3%	-0.1%	0.3%	-0.1%	0.2%	-0.2%	0.1%	-0.3%				
Gypsy/Roma/Irish Trav	0.1%	0.0%	-0.1%	0.1%	-0.1%	0.1%	0.0%	0.1%	0.0%				
Mixed Other	0.8%	0.9%	0.1%	1.1%	0.3%	1.2%	0.3%	1.0%	0.1%				
Mixed White & Asian	1.3%	0.4%	-0.9%	0.5%	-0.8%	0.4%	-0.9%	0.5%	-0.7%				
Mixed Wht & Bck Afr	0.7%	0.4%	-0.3%	0.4%	-0.3%	0.8%	0.1%	0.4%	-0.3%				
Mixed Wht & Bck Carib	1.6%	0.7%	-0.9%	0.8%	-0.9%	1.0%	-0.7%	0.9%	-0.7%				
Other Ethnic Group	0.4%	1.6%	1.2%	1.7%	1.3%	1.6%	1.2%	2.1%	1.7%				
White Irish	0.3%	0.1%	-0.2%	0.1%	-0.1%	0.2%	-0.1%	0.4%	0.1%				
White Other	3.2%	3.9%	0.7%	4.8%	1.6%	4.8%	1.6%	4.6%	1.4%				
Not Recorded	0.0%	21.4%	21.4%	17.1%	17.1%	16.0%	16.0%	13.8%	13.8%				
Refused	0.0%	0.2%	0.2%	0.1%	0.1%	0.2%	0.2%	0.1%	0.1%				
White British	81.9%	64.1%	-17.9%	65.7%	-16.2%	65.4%	-16.5%	68.6%	-13.3%				
All BME	18.1%	14.3%	-3.8%	17.1%	-1.0%	18.4%	0.3%	17.4%	-0.6%				

### Ethnicity Breakdown 1: Early help involvements open year end and new in the quarter compared with Swindon under 18 population

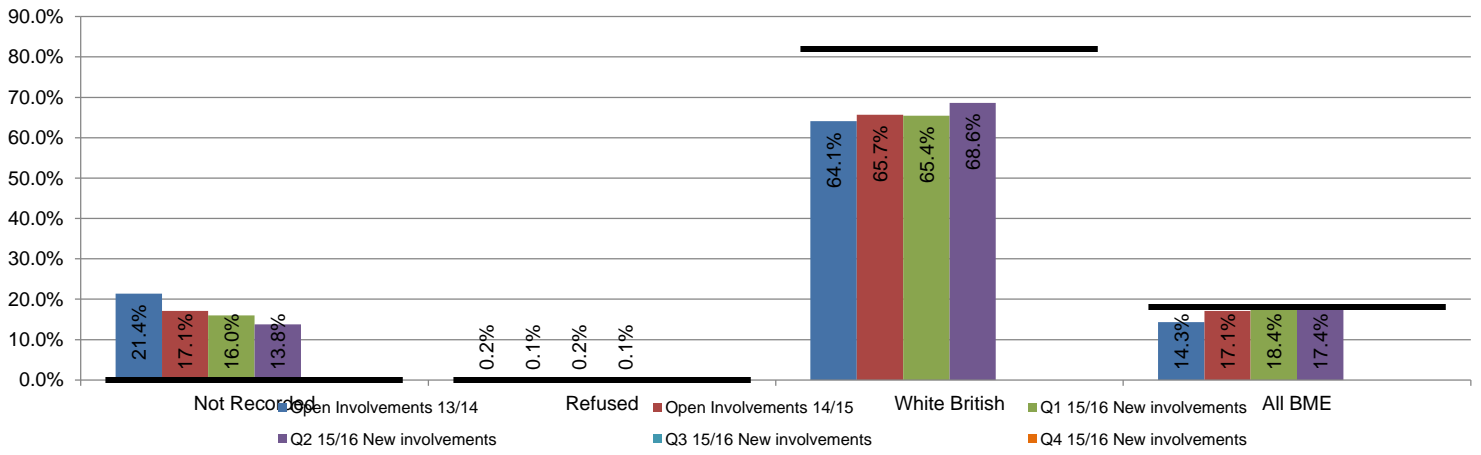


## Early Help Equalities Monitoring

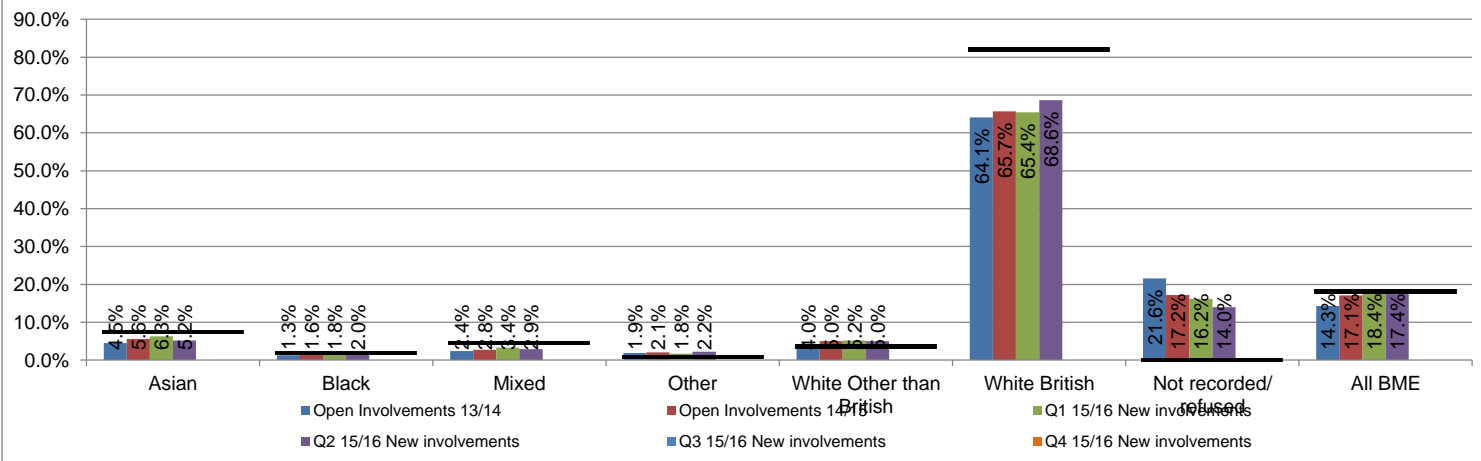
### Ethnicity Breakdown 2: Early help involvements open year end and new in the quarter compared with Swindon under 18 population



### Ethnicity Breakdown 3: Early help involvements open year end and new in the quarter compared with Swindon under 18 population



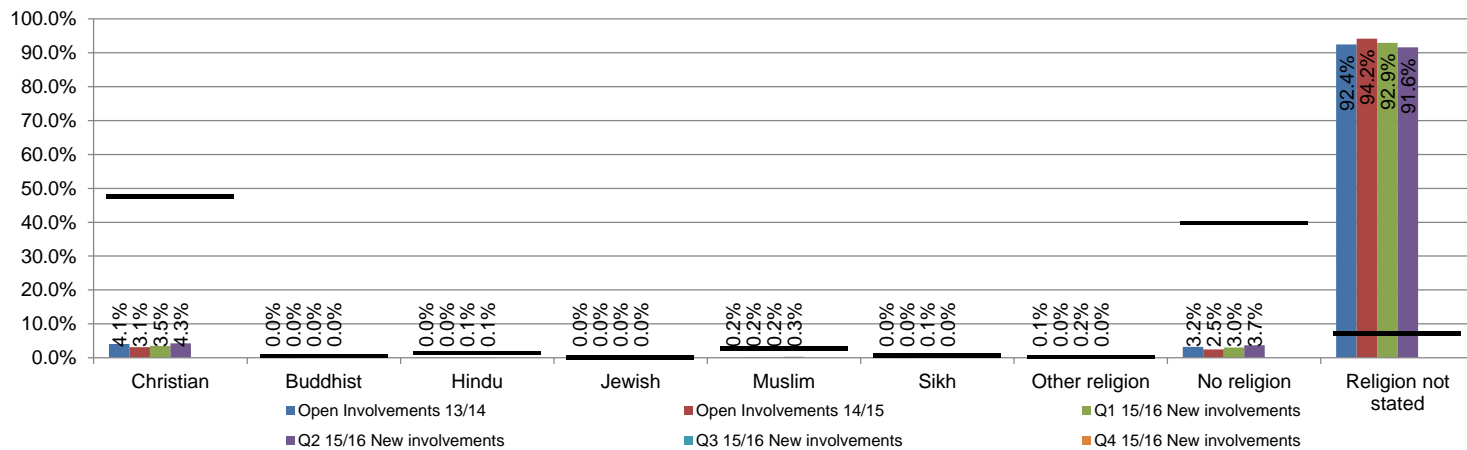
### Ethnicity Breakdown 4: Early help involvements open year end and new in the quarter compared with Swindon under 18 population



## Early Help Equalities Monitoring

Religion													
	Pop	OI 13/14		OI 14/15		Q1 15/16 NI		Q2 15/16 NI		Q3 15/16 NI		Q4 15/16 NI	
		OI	Diff	OI	Diff	NI	Diff	NI	Diff	NI	Diff	NI	Diff
Christian	47.6%	4.1%	-43.5%	3.1%	-44.5%	3.5%	-44.1%	4.3%	-43.3%				
Buddhist	0.5%	0.0%	-0.5%	0.0%	-0.5%	0.0%	-0.5%	0.0%	-0.5%				
Hindu	1.4%	0.0%	-1.4%	0.0%	-1.4%	0.1%	-1.3%	0.1%	-1.3%				
Jewish	0.0%	0.0%	0.0%	0.0%	0.0%	0.0%	0.0%	0.0%	0.0%				
Muslim	2.7%	0.2%	-2.5%	0.2%	-2.5%	0.2%	-2.5%	0.3%	-2.4%				
Sikh	0.7%	0.0%	-0.6%	0.0%	-0.6%	0.1%	-0.5%	0.0%	-0.7%				
Other religion	0.2%	0.1%	-0.2%	0.0%	-0.2%	0.2%	-0.1%	0.0%	-0.2%				
No religion	39.7%	3.2%	-36.5%	2.5%	-37.2%	3.0%	-36.6%	3.7%	-36.0%				
Religion not stated	7.2%	92.4%	85.2%	94.2%	87.0%	92.9%	85.7%	91.6%	84.4%				

**Religion Breakdown: Early help involvements open year end and new in the quarter compared with Swindon under 18 population**



Disability (Long Term Limiting Illness)													
	Pop*	OI 13/14		OI 14/15		Q1 15/16 NI		Q2 15/16 NI		Q3 15/16 NI		Q4 15/16 NI	
		OI	Diff	OI	Diff	NI	Diff	NI	Diff	NI	Diff	NI	Diff
Disabled	3.4%	5.9%	2.5%	7.2%	3.8%	5.9%	2.5%	5.9%	2.5%				

\* Only available for 0-15 year olds on national census

**Disability Breakdown: Early help involvements open year end and new in the quarter compared with Swindon under 15 population**

