

Swindon Borough Local Plan 2026

Proposed Modifications

Appendix 2: Proposed Map Modifications

Swindon Borough Local Plan 2026

Proposed Map Modifications

Proposed Modification Number: MM31

Map Inset: Boroughwide/Urban Area Policies Maps

Modification: Add 'Safeguarded route for Swindon and Cricklade Railway'



Not to Scale - Please refer to the Swindon Borough Local Plan 2026 - Pre-Submission Draft Policies Maps

This map is reproduced from Ordnance Survey material with the permission of Ordnance Survey on behalf of the Controller of Her Majesty's Stationery Office © Crown copyright. Unauthorised reproduction infringes Crown copyright and may lead to prosecution or civil proceedings. Swindon Borough Council 100024296 2014

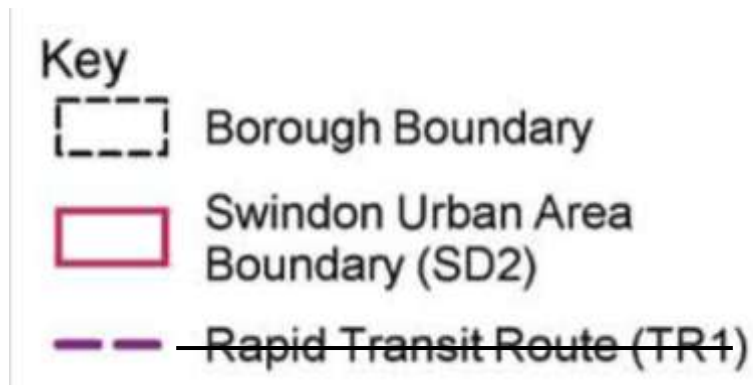
Swindon Borough Local Plan 2026

Proposed Map Modifications

Proposed Modification Number: MM63

Map Inset: Boroughwide/Urban Area Policies Maps

Modification: Amend Key for Policies Maps to reflect amendment to Policy TR1.



Express Bus Network

Not to Scale - Please refer to the Swindon Borough Local Plan 2026 - Pre-Submission Draft Policies Maps

This map is reproduced from Ordnance Survey material with the permission of Ordnance Survey on behalf of the Controller of Her Majesty's Stationery Office © Crown copyright. Unauthorised reproduction infringes Crown copyright and may lead to prosecution or civil proceedings. Swindon Borough Council 100024296 2014

Swindon Borough Local Plan 2026

Proposed Map Modifications

Proposed Modification Number: OM05

Map Inset: Boroughwide/Urban Area Policies Maps

Modification: Amend Key for Policies Maps to reflect amendment to Policy NC5.



Not to Scale - Please refer to the Swindon Borough Local Plan 2026 - Pre-Submission Draft Policies Maps

This map is reproduced from Ordnance Survey material with the permission of Ordnance Survey on behalf of the Controller of Her Majesty's Stationery Office © Crown copyright. Unauthorised reproduction infringes Crown copyright and may lead to prosecution or civil proceedings. Swindon Borough Council 100024296 2014

Swindon Borough Local Plan 2026

Proposed Map Modifications

Proposed Modification Number: OM22

Map Inset: Boroughwide/Urban Area Policies Maps

Modification: Amend Policy reference in the Key in relation to the Central Area Action Plan.

	Historic Park and Gardens (EN10)
	Key Employment Area (EC2)
	Town Centre (SC1)
	Central Area Action Plan Boundary (SC1) <u>(SD2)</u>

Not to Scale - Please refer to the Swindon Borough Local Plan 2026 - Pre-Submission Draft Policies Maps

This map is reproduced from Ordnance Survey material with the permission of Ordnance Survey on behalf of the Controller of Her Majesty's Stationery Office © Crown copyright. Unauthorised reproduction infringes Crown copyright and may lead to prosecution or civil proceedings. Swindon Borough Council 100024296 2014

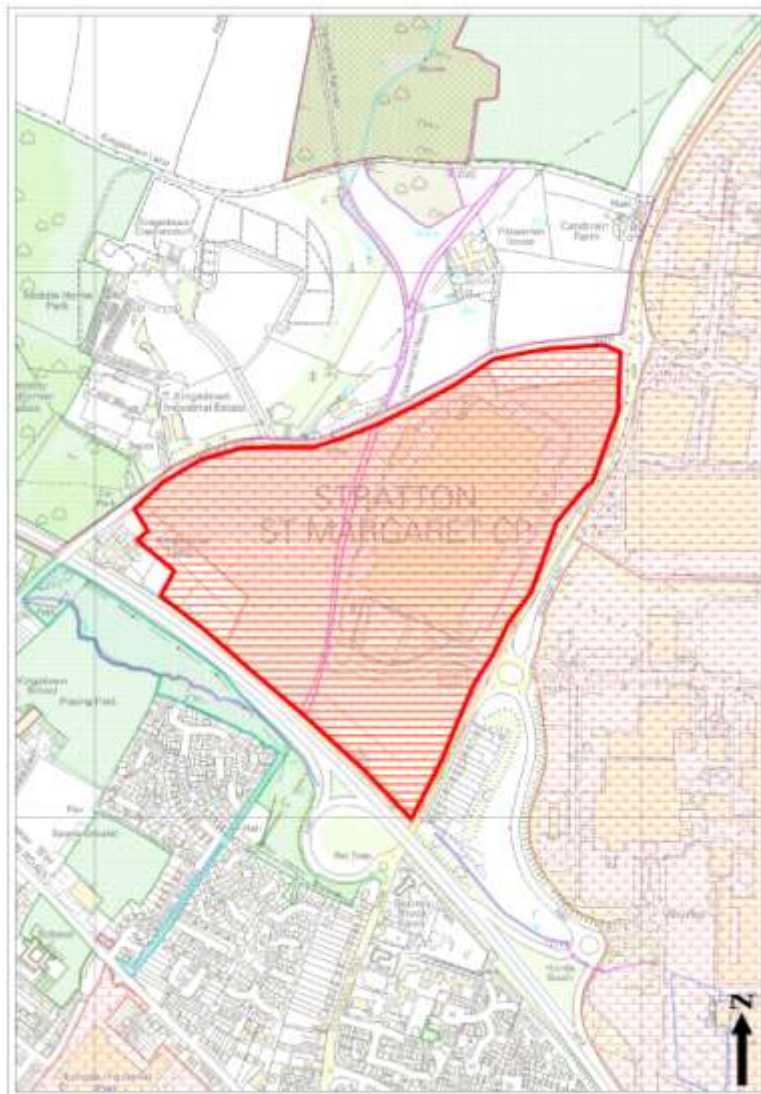
Swindon Borough Local Plan 2026

Proposed Map Modifications

Proposed Modification Number: OM56

Map Inset: Boroughwide/Urban Area Policies Map

Modification: Amend Triangle Site, (G-Park) to be-in line with the application S/05/0830



Not to Scale - Please refer to the Swindon Borough Local Plan 2026 - Pre-Submission Draft Policies Maps

This map is reproduced from Ordnance Survey material with the permission of Ordnance Survey on behalf of the Controller of Her Majesty's Stationery Office © Crown copyright. Unauthorised reproduction infringes Crown copyright and may lead to prosecution or civil proceedings. Swindon Borough Council 100024296 2014

Swindon Borough Local Plan 2026

Proposed Map Modifications

Proposed Modification Number: OM86

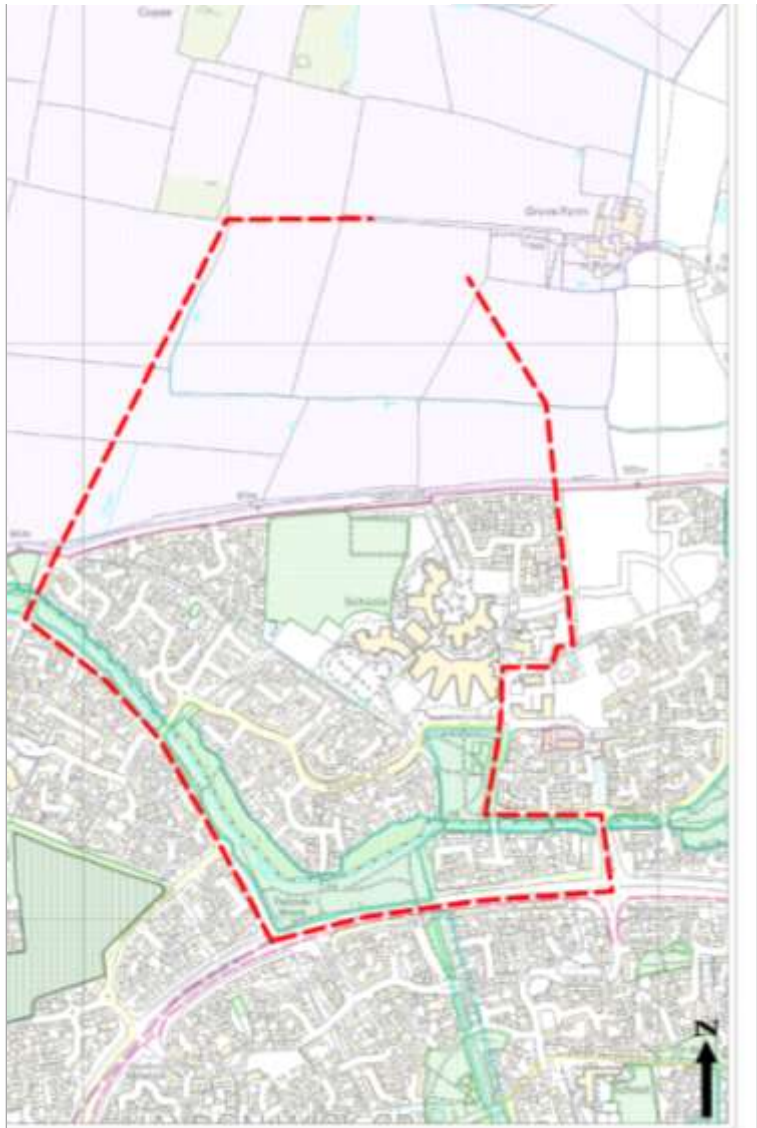
Map Inset: Boroughwide/Urban Area Policies Map

Modification: Delete section of Express Bus Network Route and replace with updated route.

Deletion of Route



New Route



Not to Scale - Please refer to the Swindon Borough Local Plan 2026 - Submission Draft Policies Maps

This map is reproduced from Ordnance Survey material with the permission of Ordnance Survey on behalf of the Controller of Her Majesty's Stationery Office © Crown copyright. Unauthorised reproduction infringes Crown copyright and may lead to prosecution or civil proceedings. Swindon Borough Council 100024296 2014

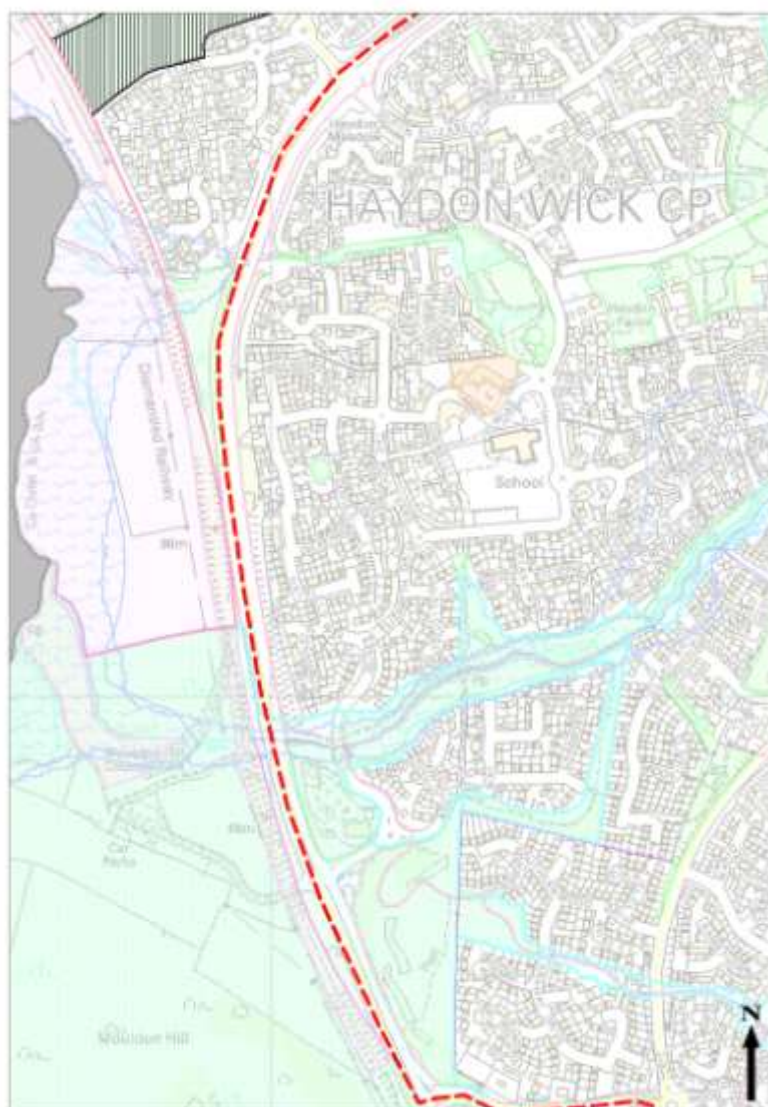
Swindon Borough Local Plan 2026

Proposed Map Modifications

Proposed Modification Number: OM87

Map Inset: Boroughwide / Urban Area Policies Map

Modification: Amend the Express Bus Network Route along part of Thamesdown Drive.



Not to Scale - Please refer to the Swindon Borough Local Plan 2026 - Pre-Submission Draft Policies Maps

This map is reproduced from Ordnance Survey material with the permission of Ordnance Survey on behalf of the Controller of Her Majesty's Stationery Office © Crown copyright. Unauthorised reproduction infringes Crown copyright and may lead to prosecution or civil proceedings. Swindon Borough Council 100024296 2014

Swindon Borough Local Plan 2026

Proposed Map Modifications

Proposed Modification Number: OM135

Map Inset: Boroughwide / Urban Area Policies Map

Modification: Amend key for Policies Map to be consistency with Policy EN1



County Wildlife Site (EN4)



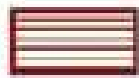
Primary Frontage (EC3)



Secondary Frontage (EC3)



Strategic Green Infrastructure Corridor (EN1)



Eastern Villages District Centre
and Employment Area (NC3)

Not to Scale - Please refer to the Swindon Borough Local Plan 2026 - Pre-Submission Draft Policies Maps

This map is reproduced from Ordnance Survey material with the permission of Ordnance Survey on behalf of the Controller of Her Majesty's Stationery Office © Crown copyright. Unauthorised reproduction infringes Crown copyright and may lead to prosecution or civil proceedings. Swindon Borough Council 100024296 2014

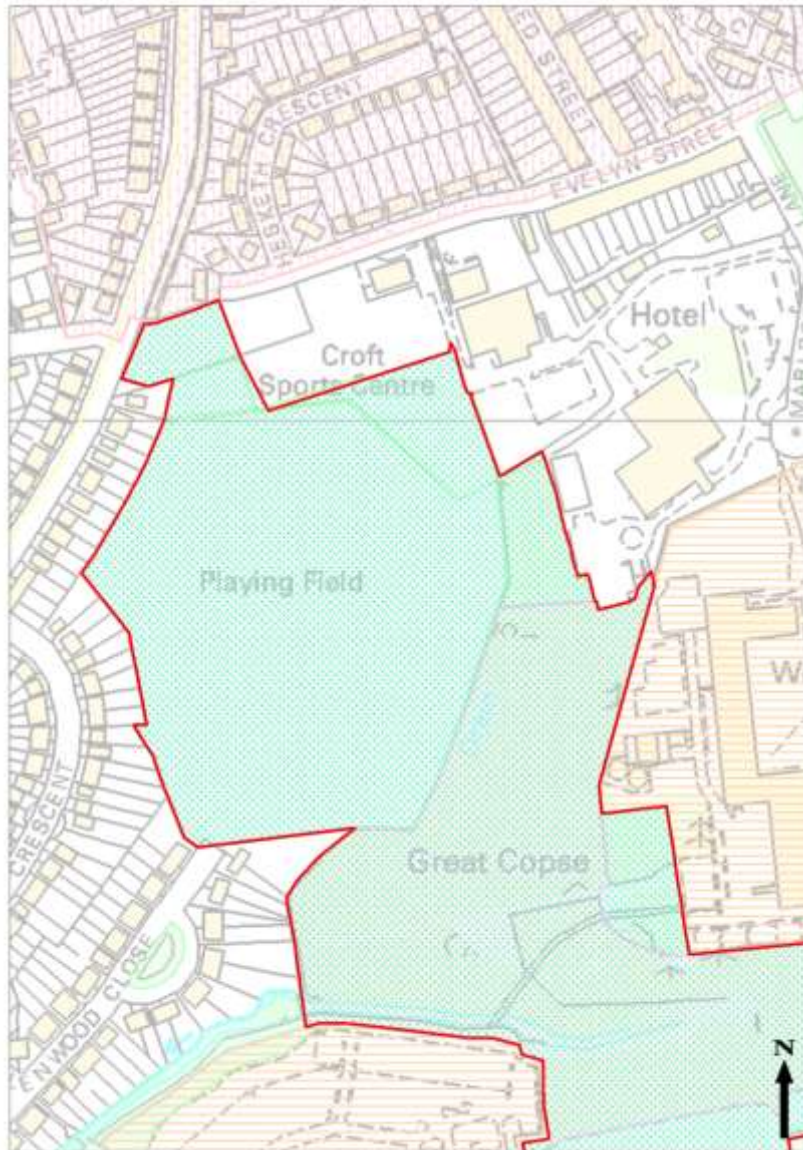
Swindon Borough Local Plan 2026

Proposed Map Modifications

Proposed Modification Number: OM266

Map Inset: Boroughwide/Urban Area Policies Map

Modification: Update of Green Infrastructure Corridor



Not to Scale - Please refer to the Swindon Borough Local Plan 2026 - Pre-Submission Draft Policies Maps

This map is reproduced from Ordnance Survey material with the permission of Ordnance Survey on behalf of the Controller of Her Majesty's Stationery Office © Crown copyright. Unauthorised reproduction infringes Crown copyright and may lead to prosecution or civil proceedings. Swindon Borough Council 100024296 2014

Swindon Borough Local Plan 2026

Proposed Map Modifications

Proposed Modification Number: OM149

Map Inset: Boroughwide/Urban Area Policies Map

Modification: Add St Catherine's primary school playing field



Not to Scale - Please refer to the Swindon Borough Local Plan 2026 - Pre-Submission Draft Policies Maps

This map is reproduced from Ordnance Survey material with the permission of Ordnance Survey on behalf of the Controller of Her Majesty's Stationery Office © Crown copyright. Unauthorised reproduction infringes Crown copyright and may lead to prosecution or civil proceedings. Swindon Borough Council 100024296 2014

Swindon Borough Local Plan 2026

Proposed Map Modifications

Proposed Modification Number: OM150

Map Inset: Boroughwide/Urban Area Policies Map

Modification: Add St Luke's primary school playing field



Not to Scale - Please refer to the Swindon Borough Local Plan 2026 - Pre-Submission Draft Policies Maps

This map is reproduced from Ordnance Survey material with the permission of Ordnance Survey on behalf of the Controller of Her Majesty's Stationery Office © Crown copyright. Unauthorised reproduction infringes Crown copyright and may lead to prosecution or civil proceedings. Swindon Borough Council 100024296 2014

Swindon Borough Local Plan 2026

Proposed Map Modifications

Proposed Modification Number: OM151

Map Inset: Boroughwide/Urban Area Policies Map

Modification: Add St Francis primary school playing field



Not to Scale - Please refer to the Swindon Borough Local Plan 2026 - Pre-Submission Draft Policies Maps

This map is reproduced from Ordnance Survey material with the permission of Ordnance Survey on behalf of the Controller of Her Majesty's Stationery Office © Crown copyright. Unauthorised reproduction infringes Crown copyright and may lead to prosecution or civil proceedings. Swindon Borough Council 100024296 2014

Swindon Borough Local Plan 2026

Proposed Map Modifications

Proposed Modification Number: OM152

Map Inset: Boroughwide/Urban Area Policies Map

Modification: Add Bridlewood primary school playing field



Not to Scale - Please refer to the Swindon Borough Local Plan 2026 - Pre-Submission Draft Policies Maps

This map is reproduced from Ordnance Survey material with the permission of Ordnance Survey on behalf of the Controller of Her Majesty's Stationery Office © Crown copyright. Unauthorised reproduction infringes Crown copyright and may lead to prosecution or civil proceedings. Swindon Borough Council 100024296 2014

Swindon Borough Local Plan 2026

Proposed Map Modifications

Proposed Modification Number: OM153

Map Inset: Boroughwide/Urban Area Policies Map

Modification: Add Catherine Wayte primary school playing field



Not to Scale - Please refer to the Swindon Borough Local Plan 2026 - Pre-Submission Draft Policies Maps

This map is reproduced from Ordnance Survey material with the permission of Ordnance Survey on behalf of the Controller of Her Majesty's Stationery Office © Crown copyright. Unauthorised reproduction infringes Crown copyright and may lead to prosecution or civil proceedings. Swindon Borough Council 100024296 2014

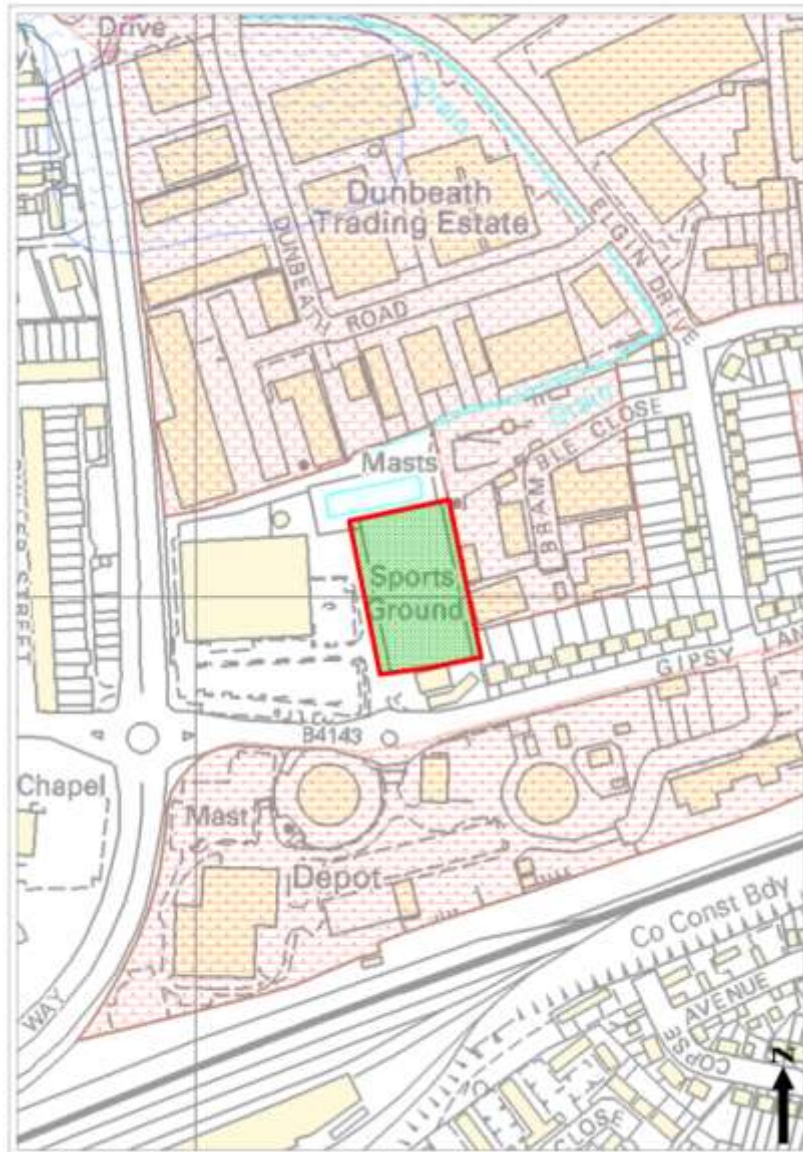
Swindon Borough Local Plan 2026

Proposed Map Modifications

Proposed Modification Number: OM154

Map Inset: Boroughwide/Urban Area Policies Map

Modification: Realigning the pitch located adjacent to Wickes store



Not to Scale - Please refer to the Swindon Borough Local Plan 2026 - Pre-Submission Draft Policies Maps

This map is reproduced from Ordnance Survey material with the permission of Ordnance Survey on behalf of the Controller of Her Majesty's Stationery Office © Crown copyright. Unauthorised reproduction infringes Crown copyright and may lead to prosecution or civil proceedings. Swindon Borough Council 100024296 2014

Swindon Borough Local Plan 2026

Proposed Map Modifications

Proposed Modification Number: OM155

Map Inset: Boroughwide/Urban Area Policies Map

Modification: Add Oakhurst primary school playing field



Not to Scale - Please refer to the Swindon Borough Local Plan 2026 - Pre-Submission Draft Policies Maps

This map is reproduced from Ordnance Survey material with the permission of Ordnance Survey on behalf of the Controller of Her Majesty's Stationery Office © Crown copyright. Unauthorised reproduction infringes Crown copyright and may lead to prosecution or civil proceedings. Swindon Borough Council 100024296 2014

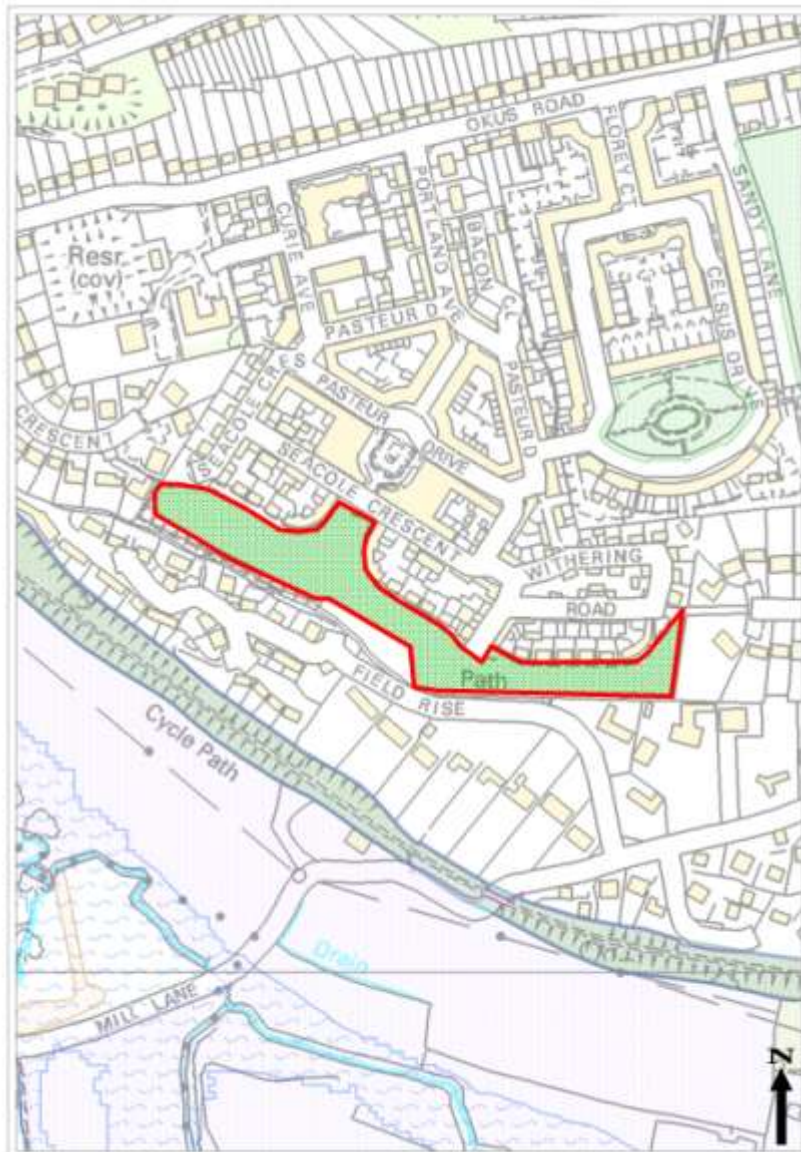
Swindon Borough Local Plan 2026

Proposed Map Modifications

Proposed Modification Number: OM156

Map Inset: Boroughwide/Urban Area Policies Map

Modification: New open space provision (general recreation) adjacent to Seacole Crescent



Not to Scale - Please refer to the Swindon Borough Local Plan 2026 - Pre-Submission Draft Policies Maps

This map is reproduced from Ordnance Survey material with the permission of Ordnance Survey on behalf of the Controller of Her Majesty's Stationery Office © Crown copyright. Unauthorised reproduction infringes Crown copyright and may lead to prosecution or civil proceedings. Swindon Borough Council 100024296 2014

Swindon Borough Local Plan 2026

Proposed Map Modifications

Proposed Modification Number: OM157

Map Inset: Boroughwide / Urban Area Policies Map

Modification: Add open space near the County Ground



Not to Scale - Please refer to the Swindon Borough Local Plan 2026 - Pre-Submission Draft Policies Maps

This map is reproduced from Ordnance Survey material with the permission of Ordnance Survey on behalf of the Controller of Her Majesty's Stationery Office © Crown copyright. Unauthorised reproduction infringes Crown copyright and may lead to prosecution or civil proceedings. Swindon Borough Council 100024296 2014

Swindon Borough Local Plan 2026

Proposed Map Modifications

Proposed Modification Number: OM267

Map Inset: Boroughwide/Urban Area Policies Map

Modification: Update to open space



Not to Scale - Please refer to the Swindon Borough Local Plan 2026 - Pre-Submission Draft Policies Maps

This map is reproduced from Ordnance Survey material with the permission of Ordnance Survey on behalf of the Controller of Her Majesty's Stationery Office © Crown copyright. Unauthorised reproduction infringes Crown copyright and may lead to prosecution or civil proceedings. Swindon Borough Council 100024296 2014

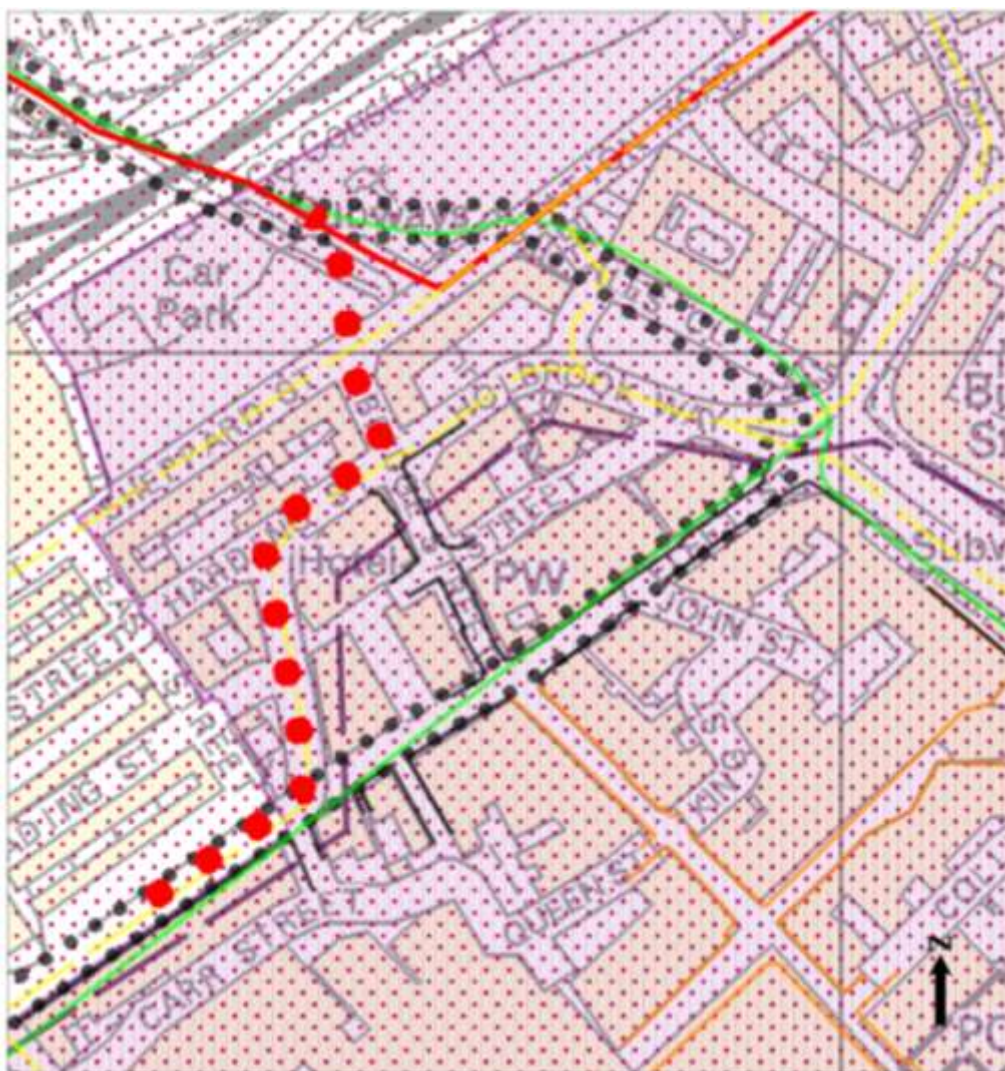
Swindon Borough Local Plan 2026

Proposed Map Modifications

Proposed Modification Number: OM186

Map Inset: Boroughwide/Urban Area Policies Maps

Modification: Proposed change to the indicative canal route through Central Swindon



Not to Scale - Please refer to the Swindon Borough Local Plan 2026 - Pre-Submission Draft Policies Maps

This map is reproduced from Ordnance Survey material with the permission of Ordnance Survey on behalf of the Controller of Her Majesty's Stationery Office © Crown copyright. Unauthorised reproduction infringes Crown copyright and may lead to prosecution or civil proceedings. Swindon Borough Council 100024296 2014

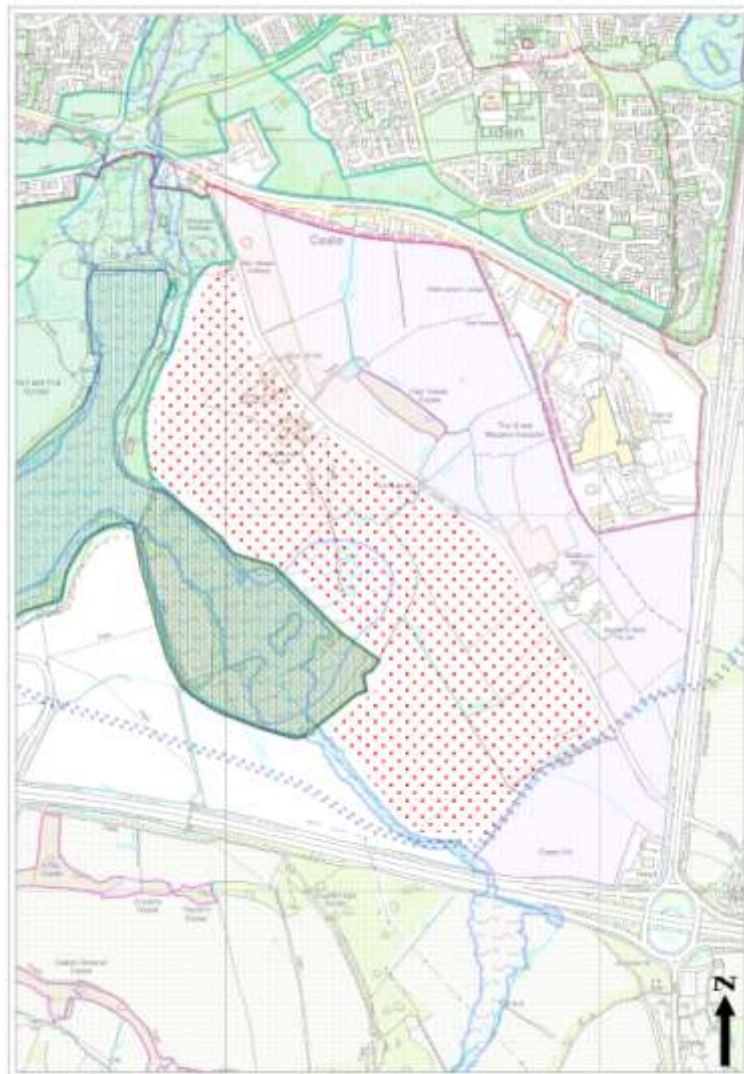
Swindon Borough Local Plan 2026

Proposed Map Modifications

Proposed Modification Number: OM203

Map Inset: Boroughwide/Urban Area Policies Maps

Modification: Insert new key reference 'Setting Protection for Coate Water Country Park' and amend colour of the area between Coate Water and the new development



Not to Scale - Please refer to the Swindon Borough Local Plan 2026 - Pre-Submission Draft Policies Maps

This map is reproduced from Ordnance Survey material with the permission of Ordnance Survey on behalf of the Controller of Her Majesty's Stationery Office © Crown copyright. Unauthorised reproduction infringes Crown copyright and may lead to prosecution or civil proceedings. Swindon Borough Council 100024296 2014

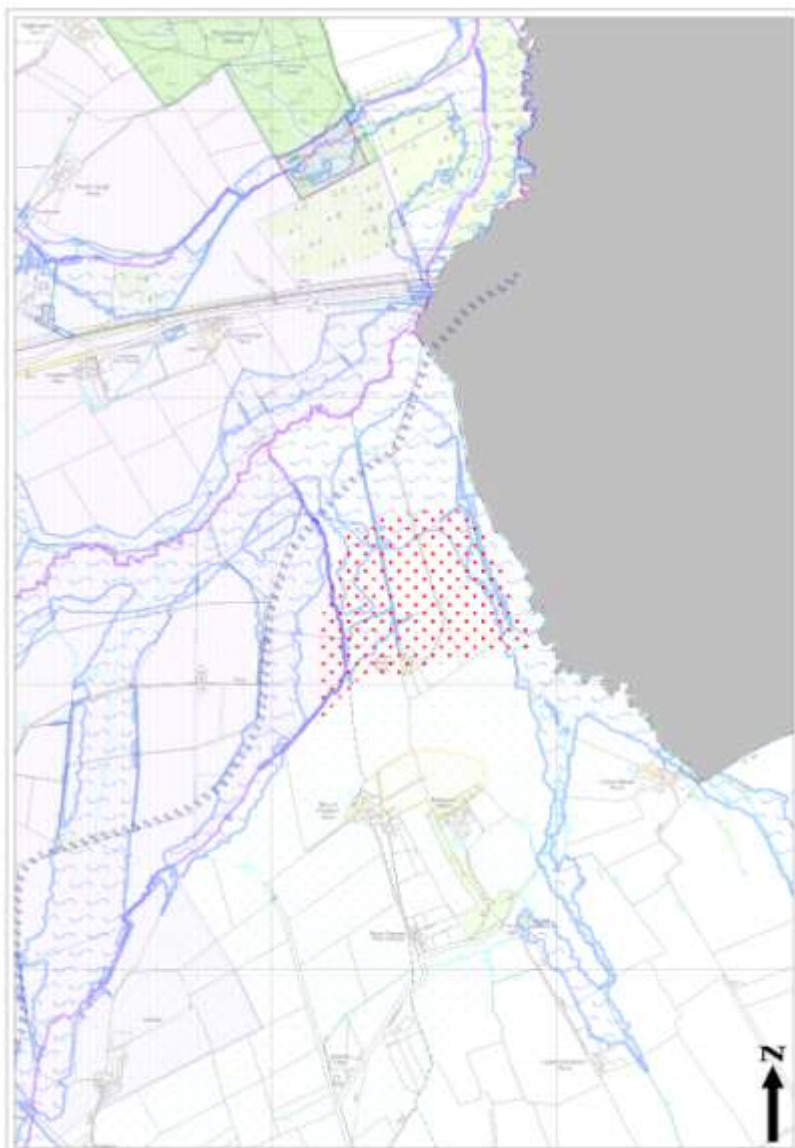
Swindon Borough Local Plan 2026

Proposed Map Modifications

Proposed Modification Number: OM209

Map Inset: Boroughwide/Urban Area Policies Maps

Modification: Extend area of non-coalescence north



Not to Scale - Please refer to the Swindon Borough Local Plan 2026 - Pre-Submission Draft Policies Maps

This map is reproduced from Ordnance Survey material with the permission of Ordnance Survey on behalf of the Controller of Her Majesty's Stationery Office © Crown copyright. Unauthorised reproduction infringes Crown copyright and may lead to prosecution or civil proceedings. Swindon Borough Council 100024296 2014

Swindon Borough Local Plan 2026

Proposed Map Modifications

Proposed Modification Number: OM237

Map Inset: Policies Map

Modification: Amend key for Policies Map to encompass all relevant policies for Employment Allocations/



Not to Scale - Please refer to the Swindon Borough Local Plan 2026 - Pre-Submission Draft Policies Maps

This map is reproduced from Ordnance Survey material with the permission of Ordnance Survey on behalf of the Controller of Her Majesty's Stationery Office © Crown copyright. Unauthorised reproduction infringes Crown copyright and may lead to prosecution or civil proceedings. Swindon Borough Council 100024296 2014

FOI 3974/14