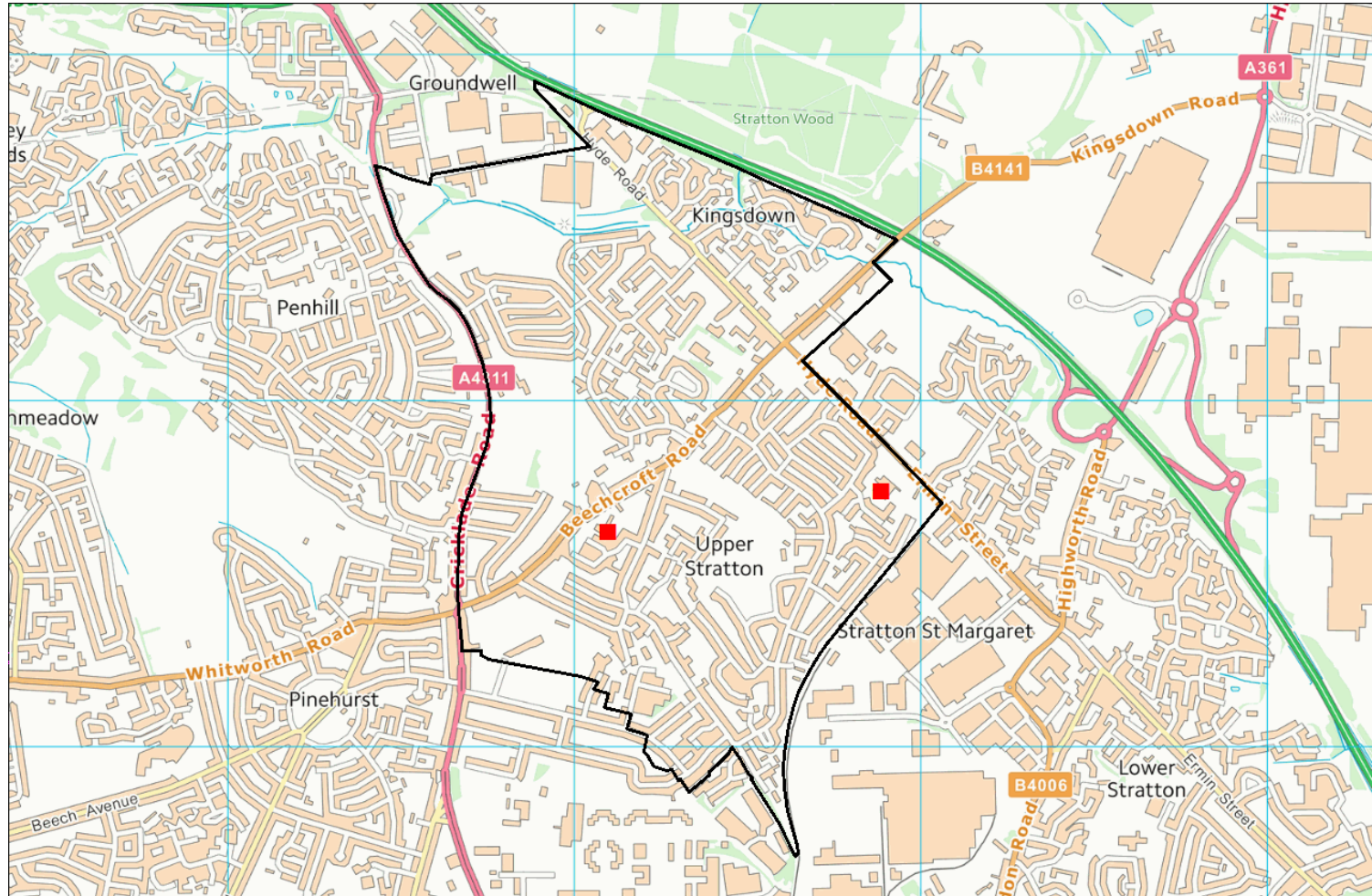


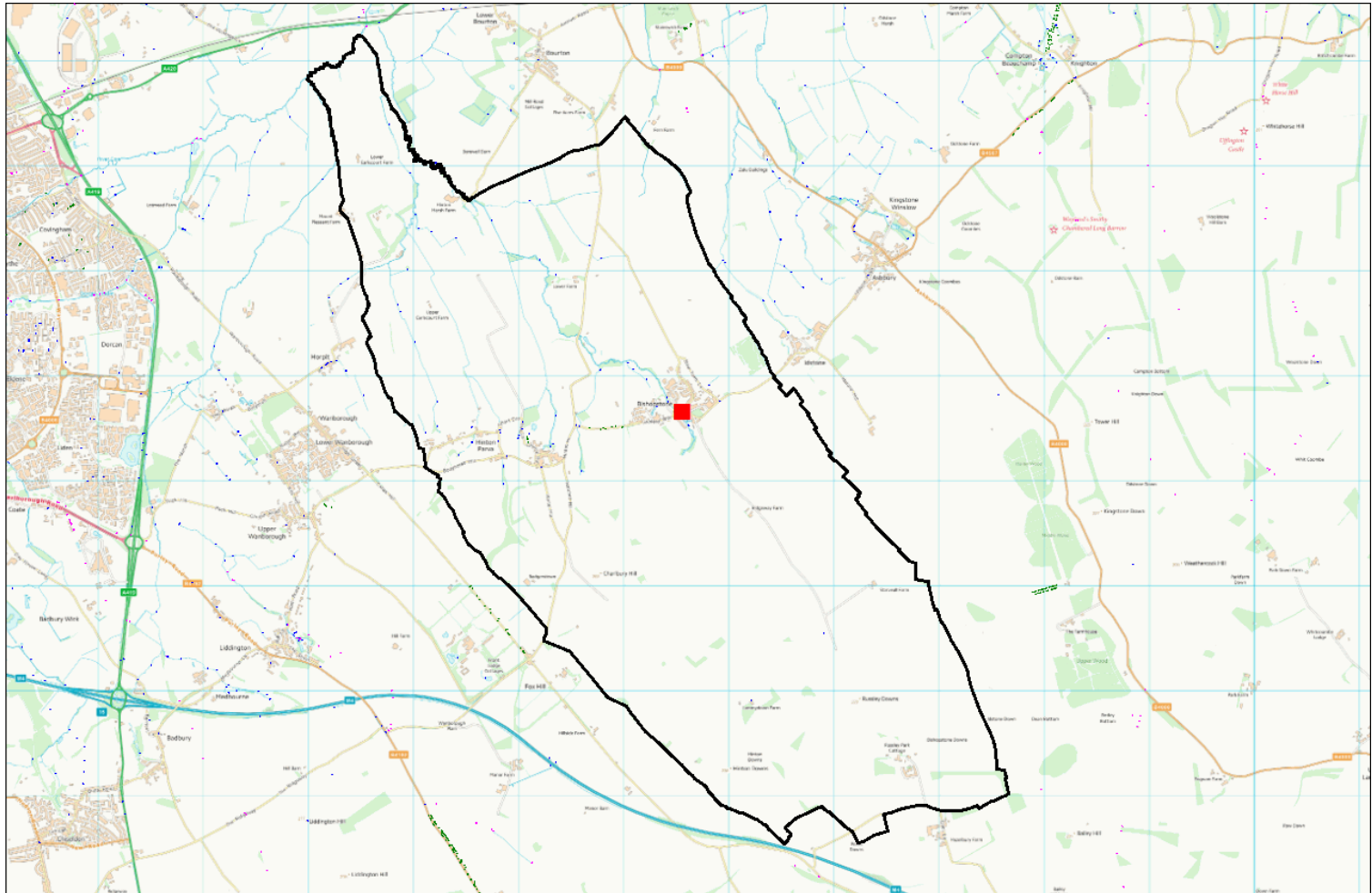
Catchment Areas  
2027-2028 Local Authority  
Maintained Schools

Swindon Borough Council

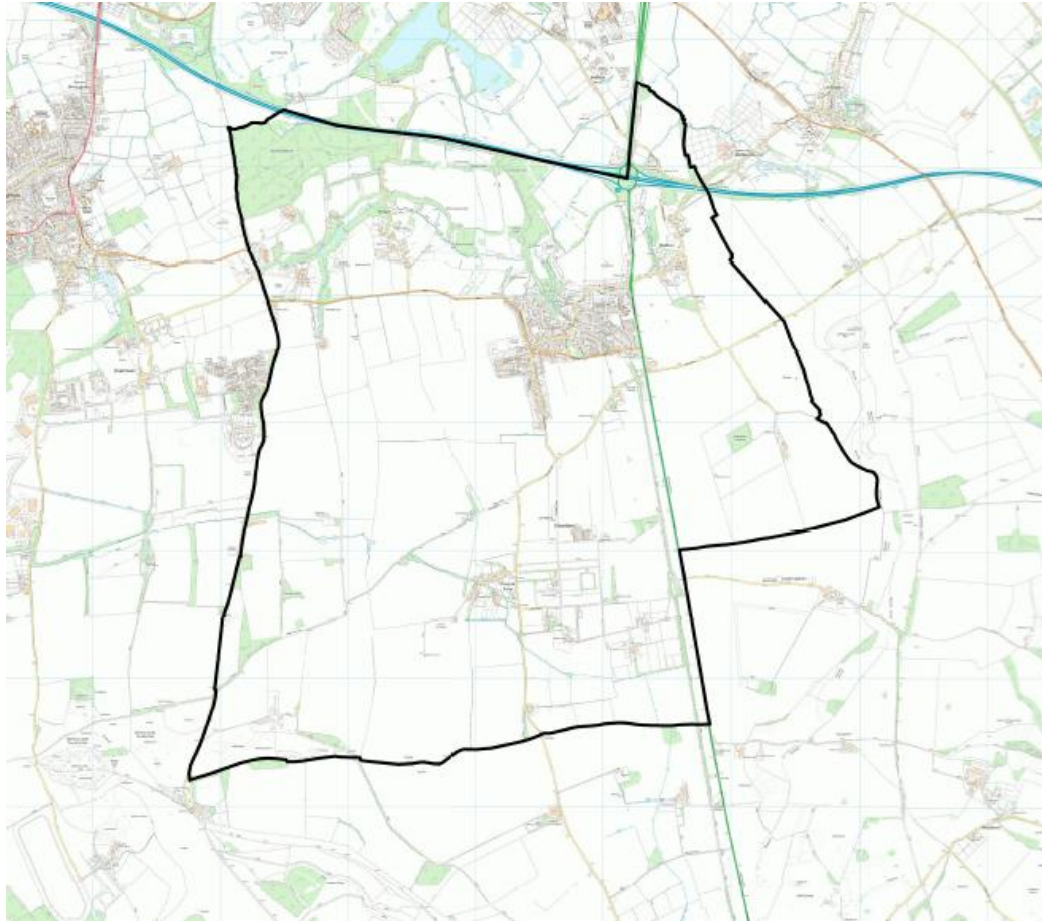
# Beechcroft Infant Catchment area 2027-2028



# Bishopstone CE Primary Catchment area 2027-2028

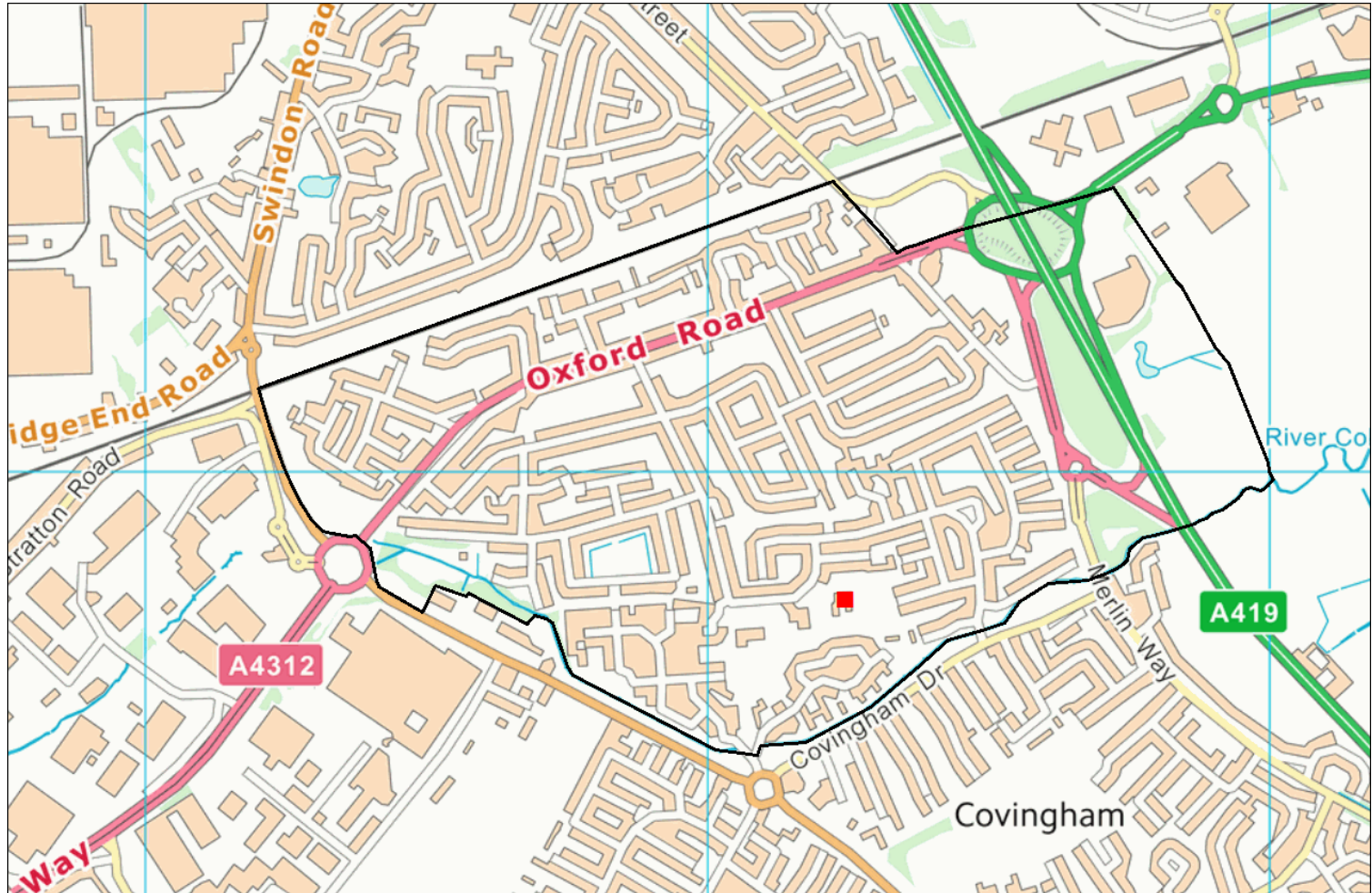


# Chiseldon Primary Catchment area 2027-2028

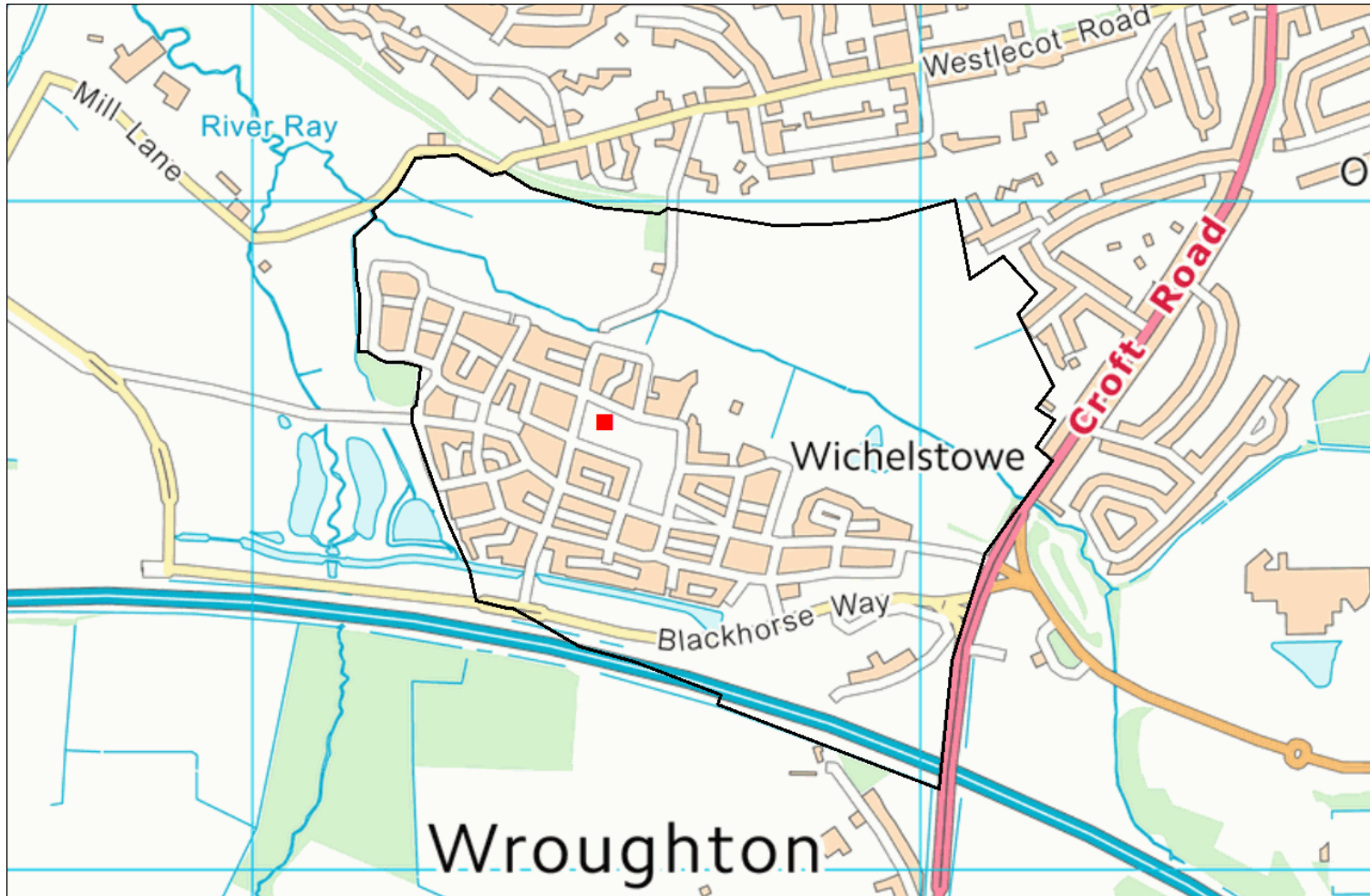




# Colebrook Junior Catchment area 2027-2028

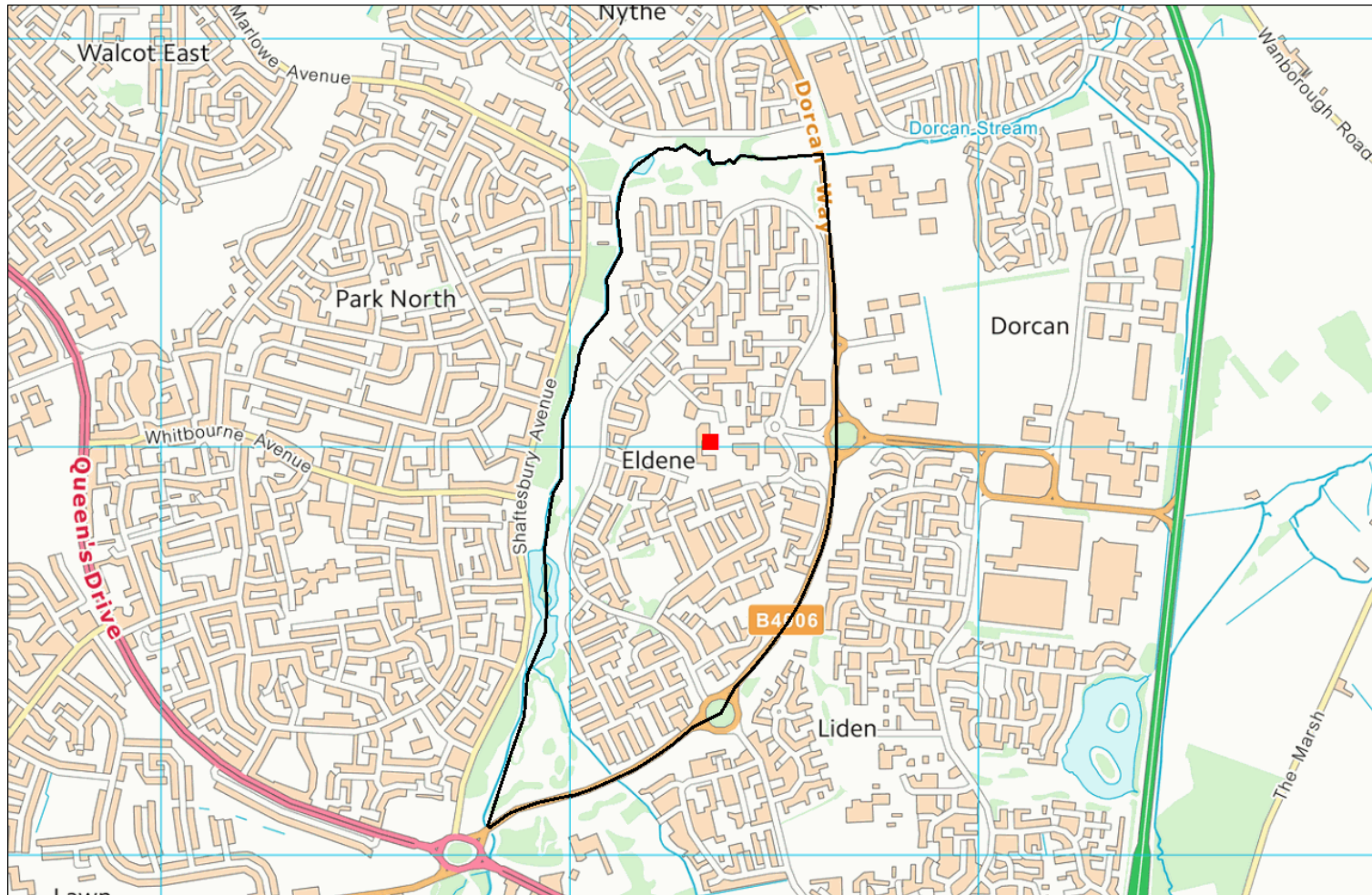


# East Wichel Primary Catchment area 2027-2028



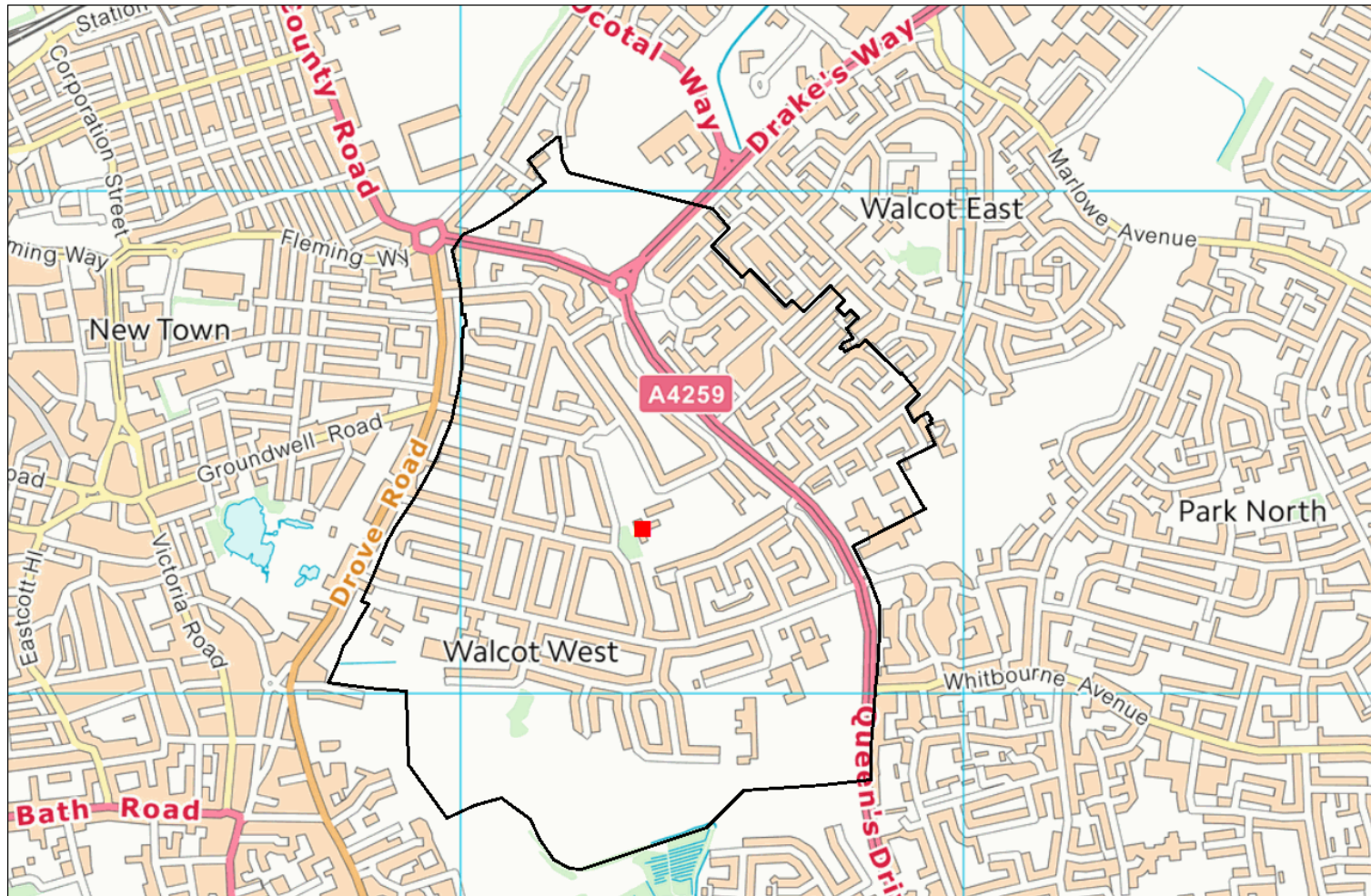
# Eldene Primary

## Catchment area 2027-2028





# Lainesmead Primary Catchment area 2027-2028





# Lawn Primary Catchment area 2027-2028



# Westrop Primary School Catchment area 2027-2028

