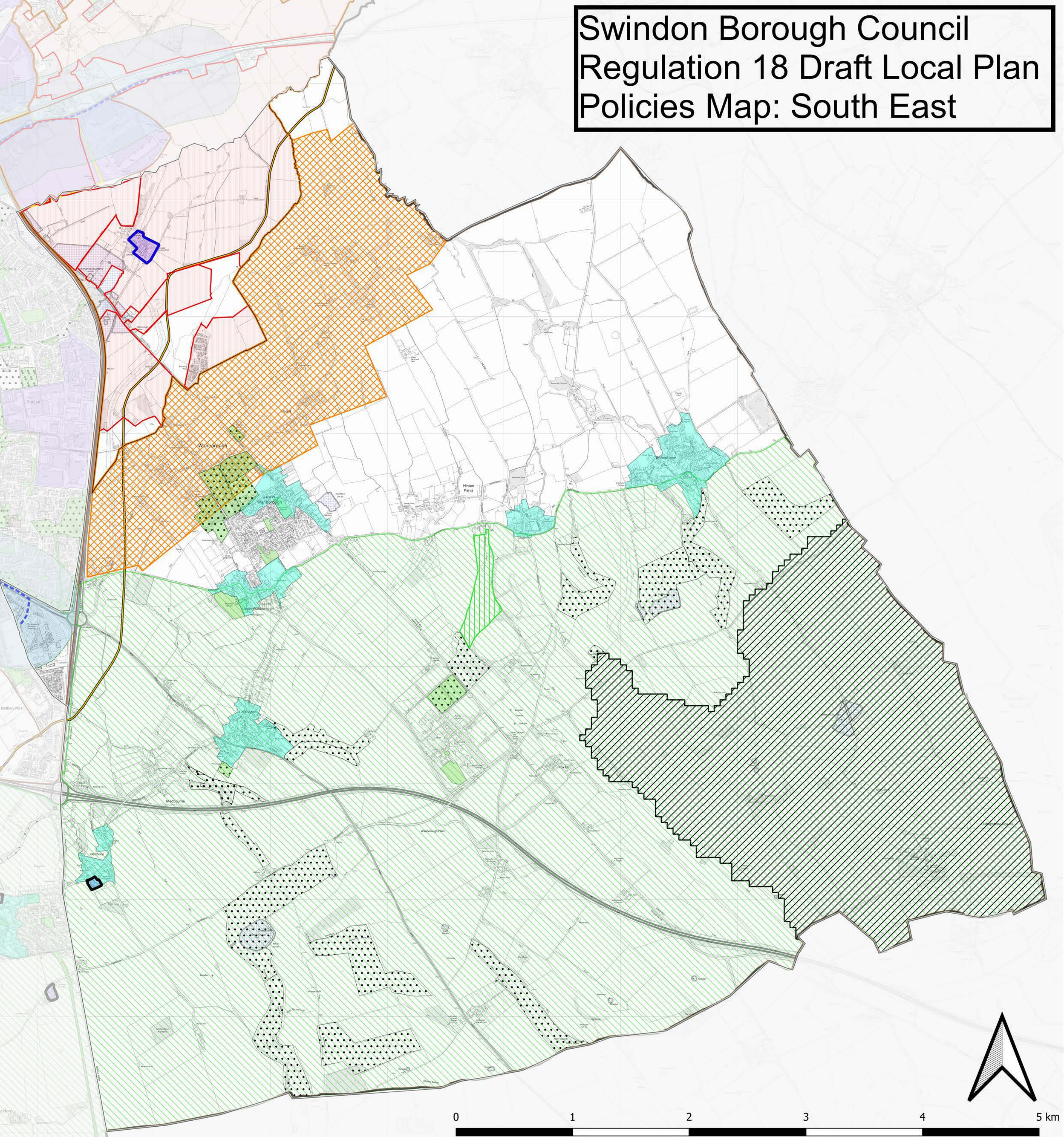


Swindon Borough Council Regulation 18 Draft Local Plan Policies Map: South East



© Crown Copyright and database rights 2025. AC0000806451.

KEY

- South East
- Swindon Boundary
- Settlement Boundaries
- LP43001 Swindon Urban Area Boundary (Reg 18)
- Strategic Growth Locations
- 45131 New Eastern Villages (Jun-25)
- Proposed Site Allocations
- LP43003 Site Allocations (Reg 18)
- Gypsy, Traveller and Travelling Showpeople Sites
- Sustainable Growth Areas and Corridors
- Sustainable Growth Areas

- 45111 Sustainable Growth Corridors
- New Employment Allocations
- NEW - Industrial Location
- NEW - Industrial Location (mixed-use transitional site)
- NEW - Industrial Location (safeguarded)
- Employment Land
- Industrial Location
- Industrial Location (mixed-use transitional site)
- Heritage
- Conservation Areas
- Scheduled Monuments
- Environment and Conservation
- Open Space

- GI Corridor
- Borough SSSI
- North Wessex Downs National Landscape
- Area of Non-Coalescence
- Indicative Wilts and Berks Canal Route
- River Lambourne SSSI Neutrient Neutrality Catchment
- Town Centres
- Local Centres



SWINDON
BOROUGH COUNCIL