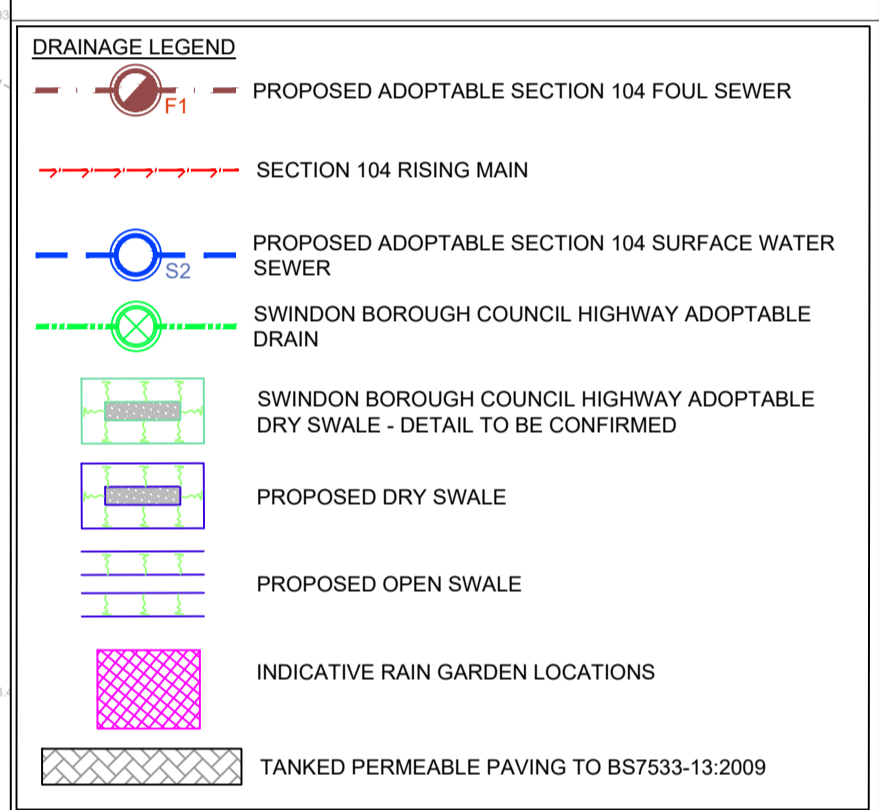
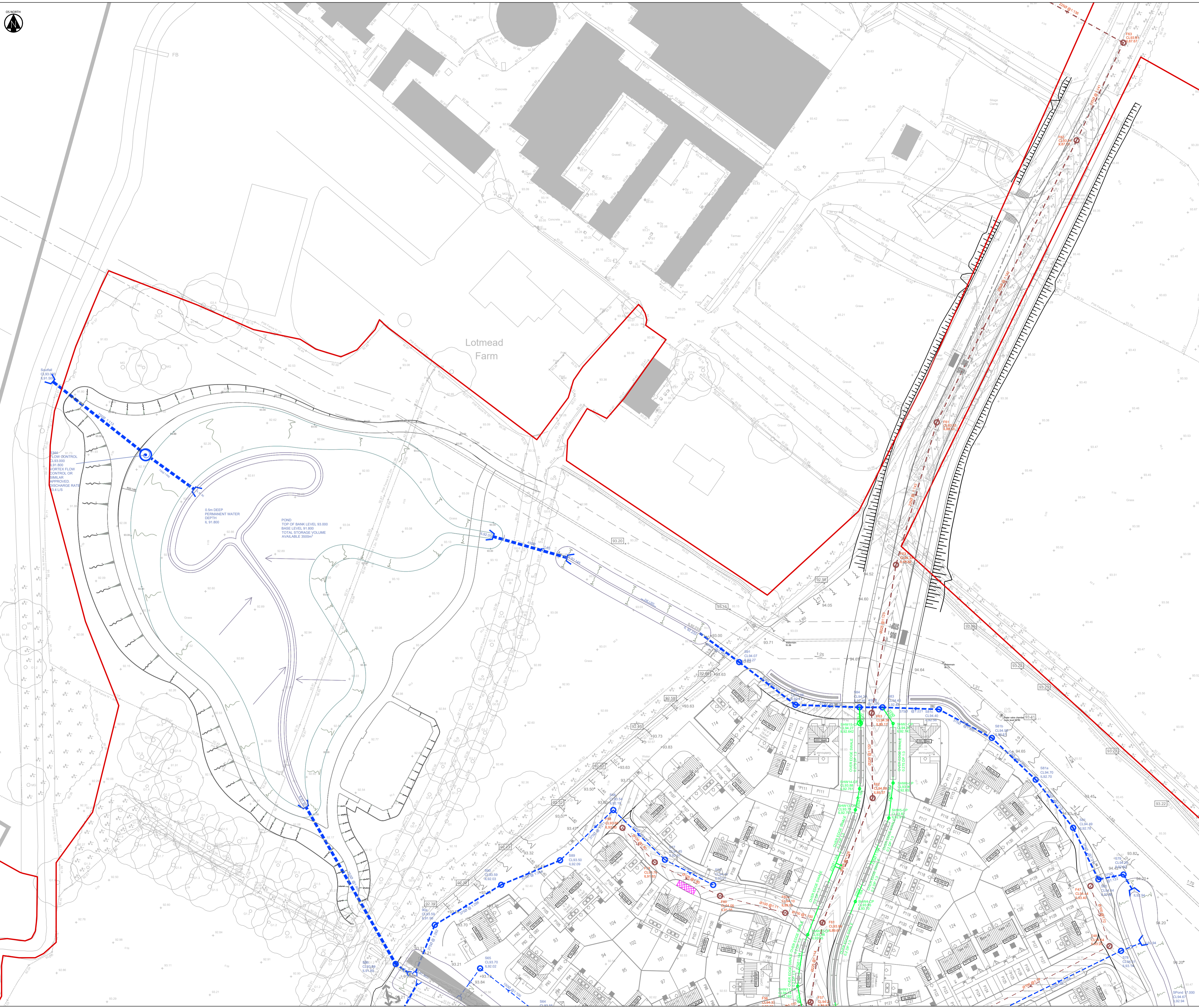


General Drainage Notes:

- The planning, design and construction of sewers shall be in accordance with Sewers Sector Guidance Appendix C, Design and Construction Guidance, the Civil Engineering Specification for the Water Industry 7th Edition and Thames Water amendments to CESWI.
- All Adoptable sewers within adoptable highway with less than 1.2m cover to have reinforced concrete slab protection. All Adoptable sewers within grassed areas with cover less than 0.9m to have reinforced concrete slab protection. All areas with greater cover than the minimum required to have type S bed and surround.
- Use of this drawing does not absolve the client from his responsibilities under the Health and Safety, The Construction Design and Management Regulations 2015. The Principal Designer is required to contact Hydrock Consultants prior to permitting this drawing to be used in connection with any construction works.
- All sewers to be laid soffit to soffit unless otherwise shown.
- All levels are to OS datum.
- Where sewers are to be constructed inside the restricted tree root zone a suitable tree root protection barrier is to be installed to Thames Water's specification.
- Designs are subject to change through detailed design.
- Refer to Hydrock Technical Note 22006-HYD-P1-XX-TN-C-0001 for details of the drainage strategy.
- Proposed drainage strategy:
Discharge rate - 43.4 l/s
Total contributing area - 4.498ha



REVISIONS

Rev	Date	Description	By	Ckd	App
P03	14/10/22	CL & ILS updated to match revised road levels, Permeable paving added.	JG	JG	JRC
P02	05/07/22	Pond designs updated	NJ	JRC	
P01	27/06/22	First Issue.	JL	GH	JRC

Hydrock OVER COURT BARN
OVER LANE
ALMONDSBURY
BRISTOL
BS32 4DF
T: +44 (0) 1454 619533
e: bristol@hydrock.com

CLIENT
COUNTRYSIDE

PROJECT
LOTMEAD FARM

TITLE
**PRELIMINARY DRAINAGE STRATEGY
SHEET 3 OF 4**

HYDROCK PROJECT NO. C-22006-C	SCALE @ A1 1 : 500	STATUS S2
STATUS DESCRIPTION INFORMATION	REVISION P03	
DRAWING NO. (PROJECT CODE-ORIGINATOR-ZONE-LEVEL-TYPE-ROLE-NUMBER) 22006-HYD-P1-XX-DR-C-2202		