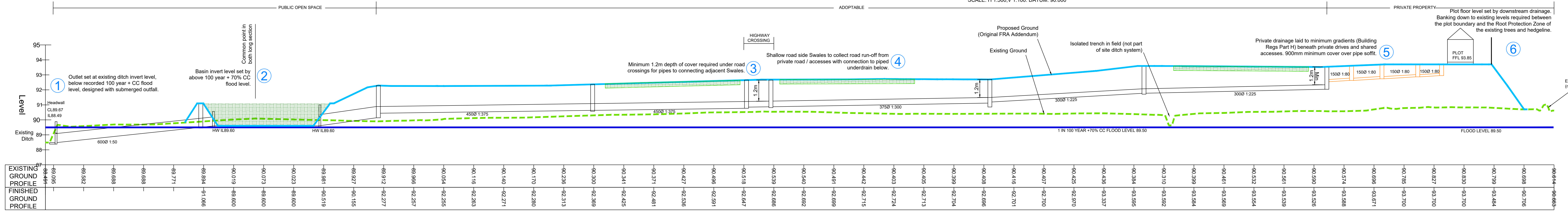


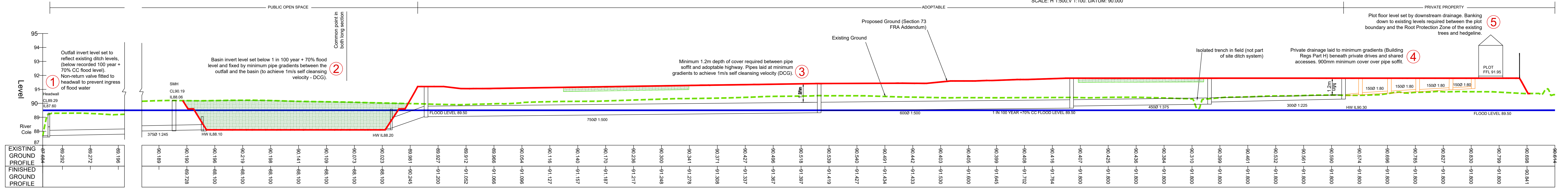
DRAINAGE LONGSECTION (ORIGINAL FRA ADDENDUM)

SCALE: H 1:500, V 1:100, DATUM: 90.000



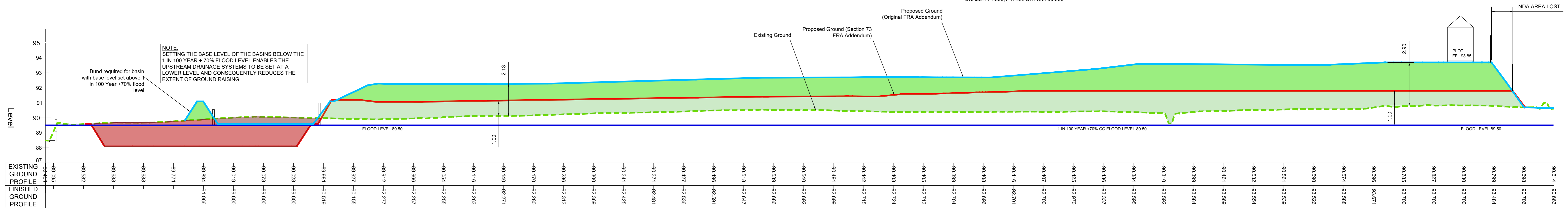
DRAINAGE LONGSECTION (SECTION 73 FRA ADDENDUM)

SCALE: H 1:500, V 1:100, DATUM: 90.000



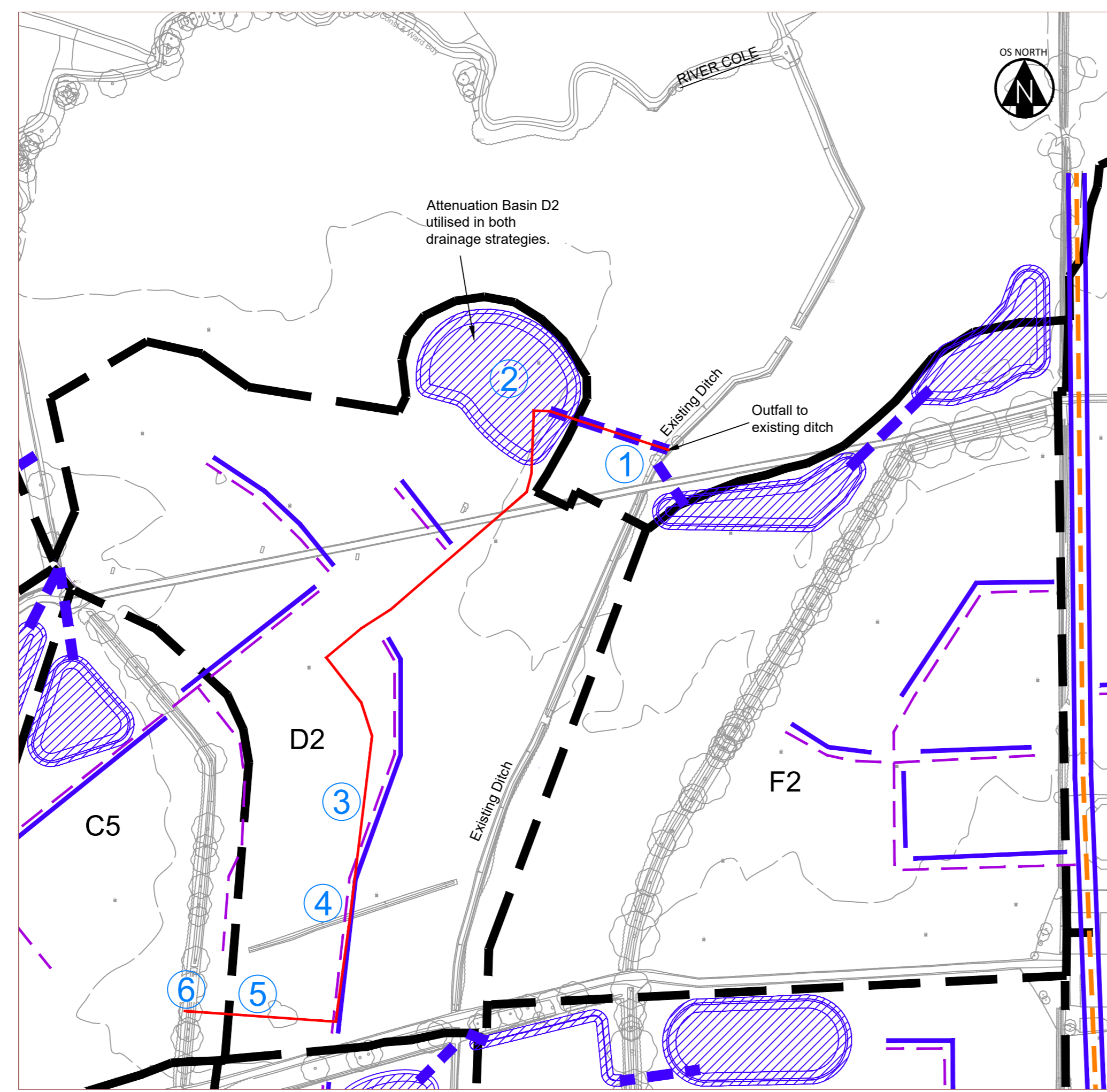
EARTHWORKS LONGSECTION: COMPARING GROUND PROFILES

SCALE: H 1:500, V 1:100, DATUM: 90.000

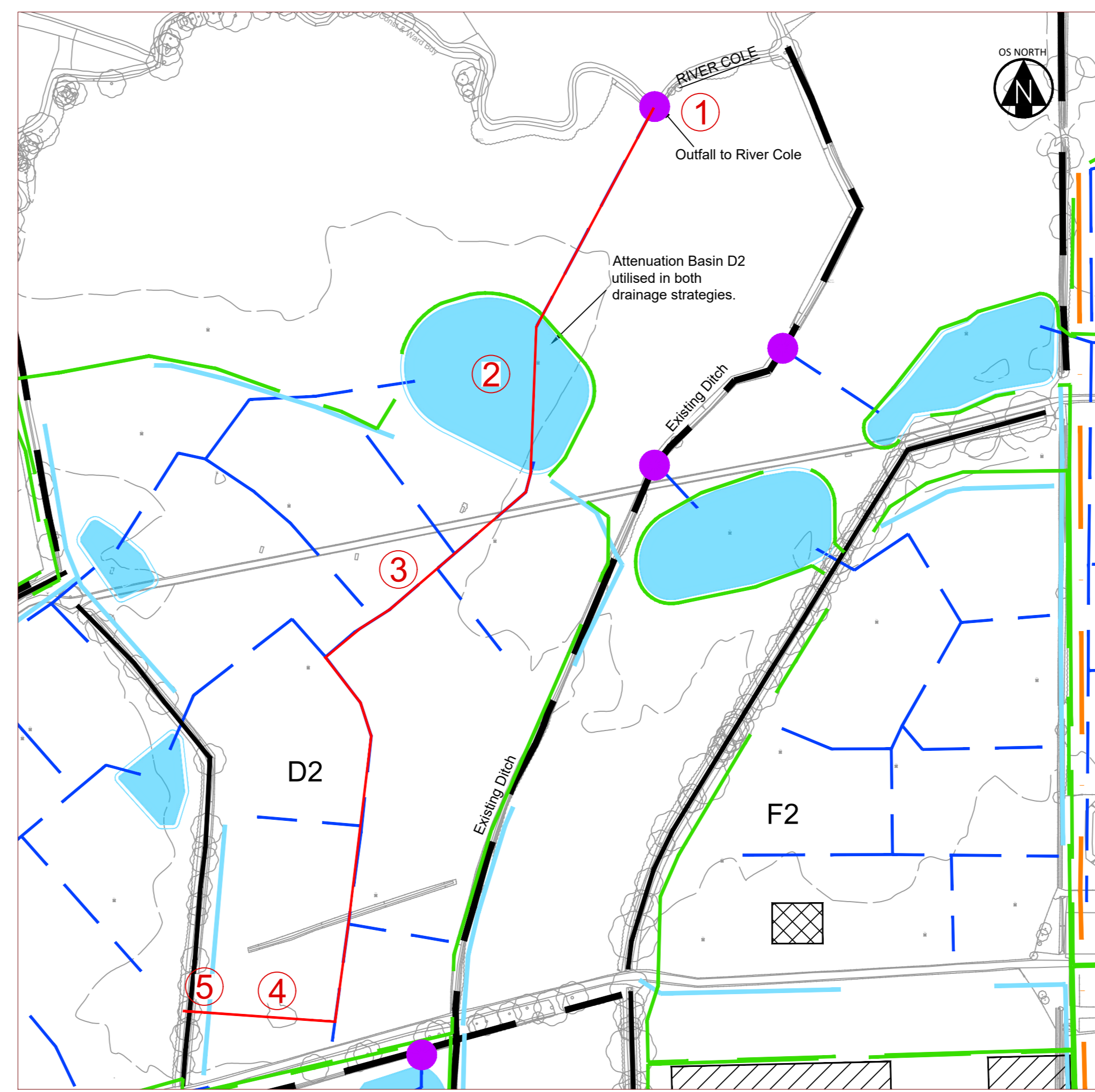


Legend

- Proposed Ground (Original FRA Addendum)
- Proposed Ground (Section 73 FRA Addendum)
- Existing Ground
- Flood Level (1 in 100 Year + 70%CC)
- Fill required to achieve Original FRA Addendum drainage scheme
- Fill required to achieve Section 73 FRA Addendum drainage scheme
- Cut required to achieve Original FRA Addendum drainage scheme
- Cut required to achieve Section 73 FRA Addendum drainage scheme
- Adoptable manhole/pipes
- Private manhole/pipes
- Attenuation / water conveyance feature
- 100 + 40% water level in network



PLAN (ORIGINAL FRA ADDENDUM)
SCALE: 1:1250



PLAN (REVISED FRA ADDENDUM)
SCALE: 1:1250

NOTE: SETTING THE BASE LEVEL OF THE BASINS BELOW THE 1 IN 100 YEAR + 70% FLOOD LEVEL ENABLES THE UPSTREAM DRAINAGE SYSTEMS TO BE SET AT A LOWER LEVEL AND CONSEQUENTLY REDUCES THE EXTENT OF GROUND RAISING.

Design Parameters Considered

- Minimum Pipe gradients have been used to achieve a min velocity in the pipe of 1m/s (DCG).
- Drainage network has been design in accordance with 'Design and Construction Guidance for foul and surface water sewers offered for adoption' version 2.0 (DCG).
- Building Regs Part H - Drainage and waste disposal
- The Suds Manual CIRIA C753
- Adoptable Highway Drainage
- 1.2m minimum cover over drainage beneath Highways, 0.9m cover beneath private driveways and 0.6m cover in private gardens.

Notes

- For information only
- Do not use this drawing for construction purposes.
- Levels subject to change at detailed design
- Do not scale from this drawing.

REVISIONS			
Rev	Date	Description	By
P03	06/10/2023	Sections orientation reversed.	JG JRC
P02	03/10/2023	General amendments.	JG JRC
P01	25/09/2023	First Issue.	JG JRC

CLIENT	SOVEREIGN SWINDON LLP
PROJECT	LOTMEAD FARM
TITLE LOTMEAD DEVELOPMENT PHASE 9 - SITE SECTIONS SHOWING GROUND RAISING REQUIRED TO ACHIEVE SURFACE WATER DRAINAGE SOLUTIONS	
HYDROCK PROJECT NO.	C-22006-C
SCALE	AS SHOWN
STATUS DESCRIPTION	INFORMATION
DRAWING NO.	22006-HYD-PO-XX-DR-C-2723
REVISION	P03