

Table A: outline approved masterplan dwelling yield (S_OUT_19_0582-PARAMETER_PLAN_DENSITY)

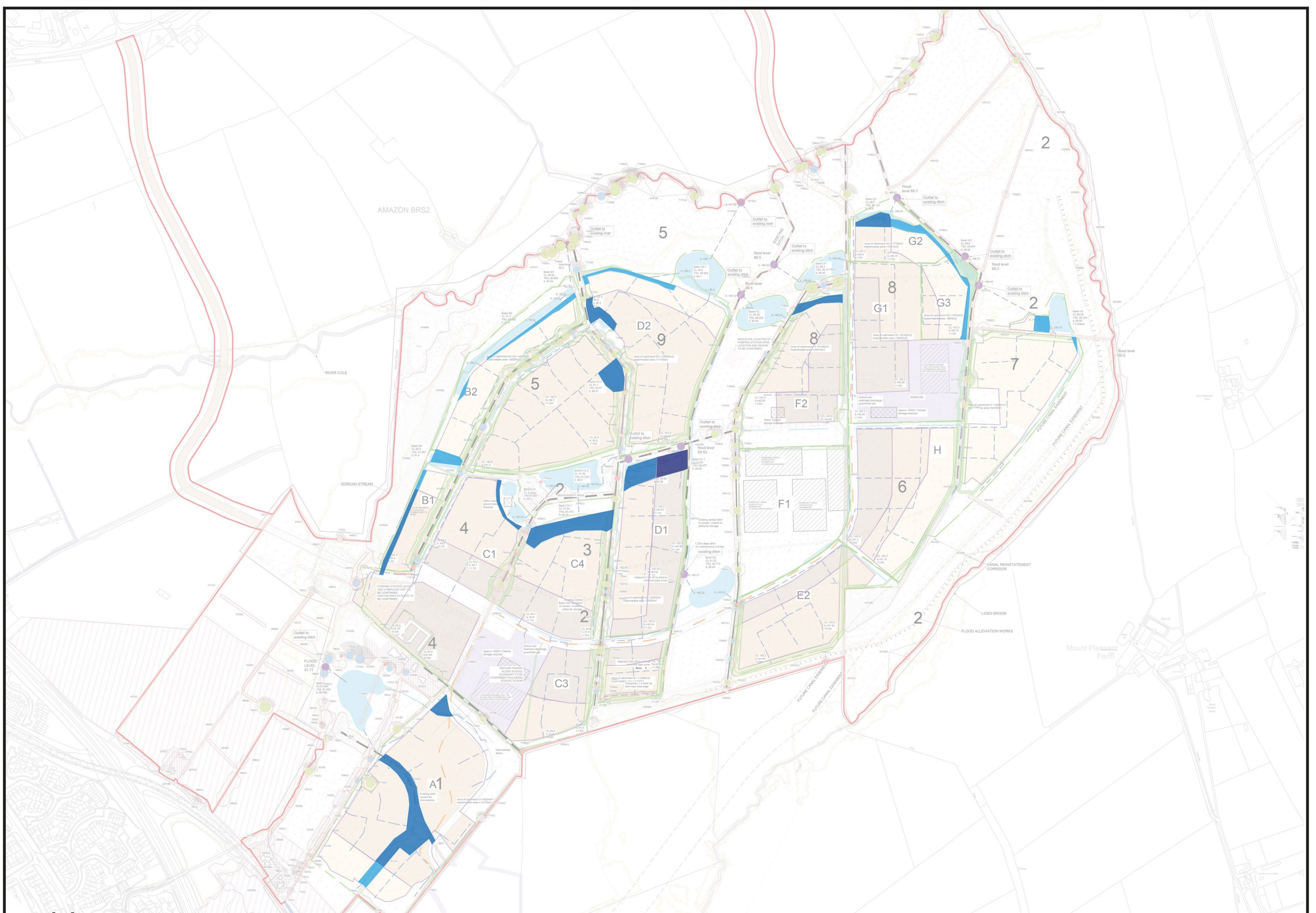


Table C: Dwelling loss - Revised FRA Addendum

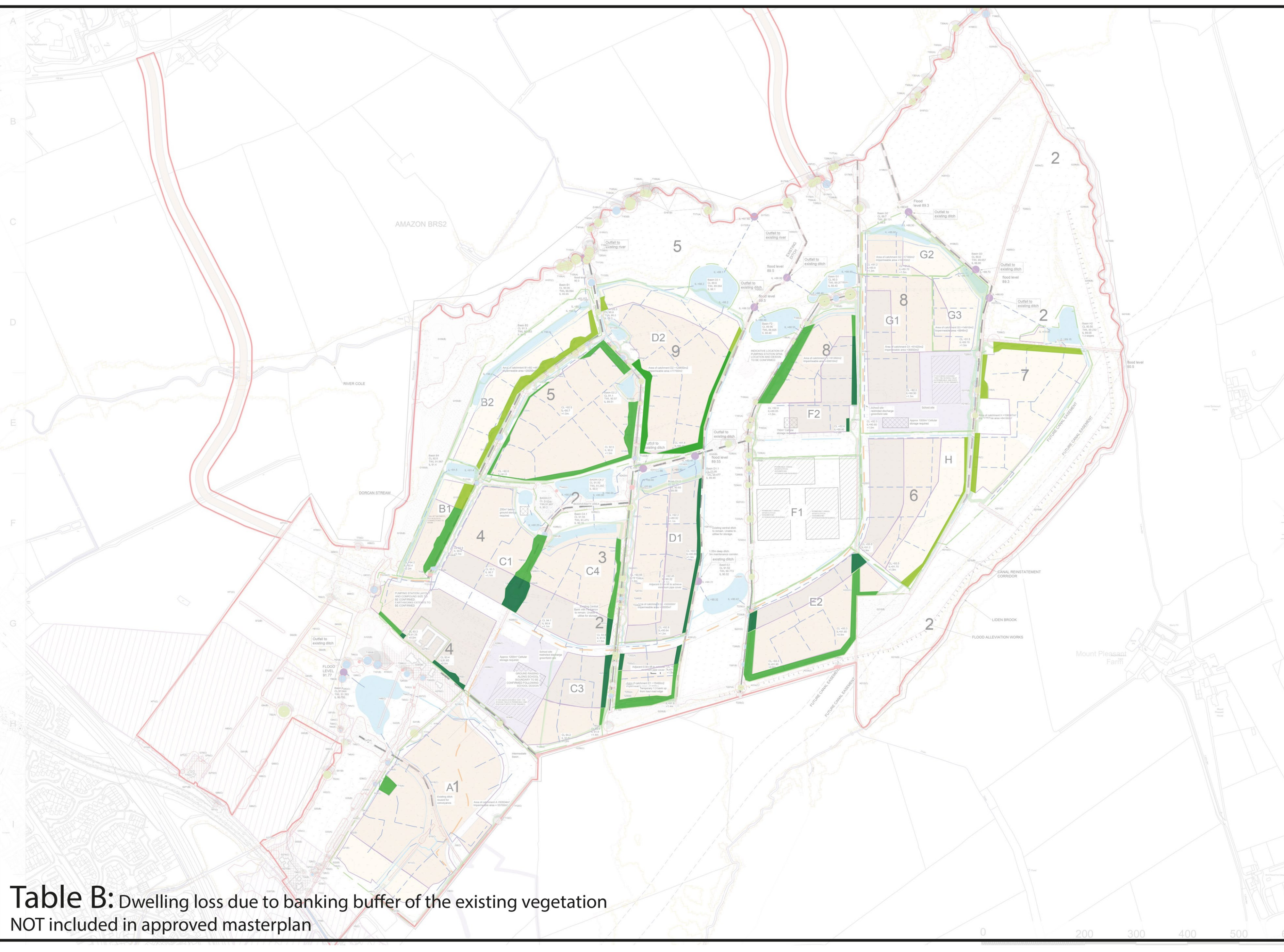


Table B: Dwelling loss due to banking buffer of the existing vegetation NOT included in approved masterplan

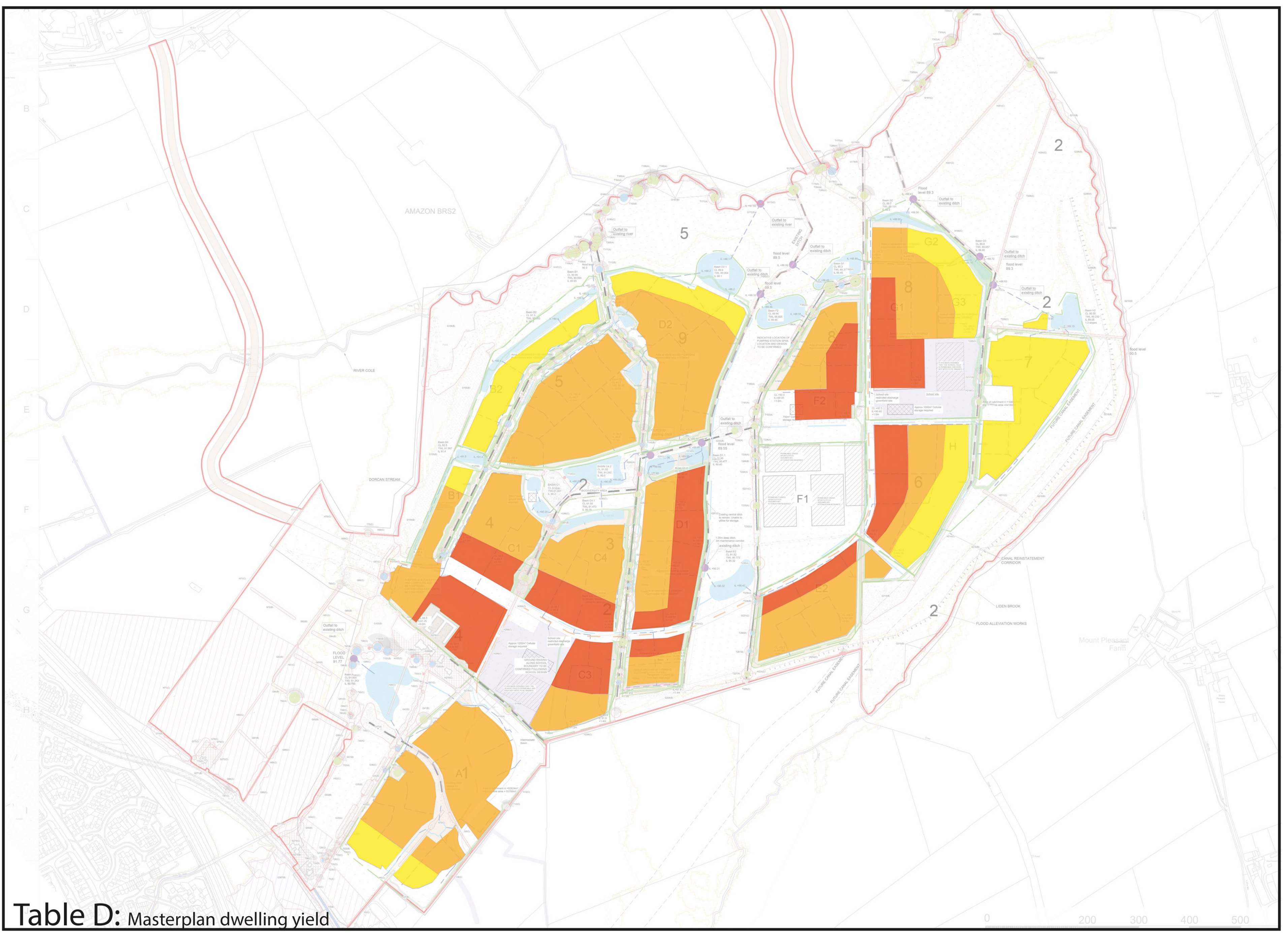


Table D: Masterplan dwelling yield

Table A:
Outline approved masterplan dwelling yield

Colour Code	Masterplan developable area (ha) A	Masterplan density - dph (maximum) B	Total developable units = AxB
	11.79	25	294
	32.64	45	1469
	13.05	55	718
Total	57.48		2481

Table B:
Dwelling loss due to banking buffer of the existing vegetation NOT included in approved masterplan

Colour Code	Area of banking for existing vegetation (ha) A	Masterplan density - dph (maximum) B	Total developable units = AxB
	1.18	25	30
	2.81	45	126
	0.91	55	50
Total	5.32		206

Table C:
Dwelling loss - Revised FRA Addendum

Colour Code	Area of drainage including buffers (ha) A	Masterplan density - dph (maximum) B	Total developable units = AxB
	0.89	25	22
	2.41	45	108
	0.23	55	13
Total	3.53		143

Table D:
Masterplan dwelling yield

Colour Code	Net developable area (ha) A	Masterplan density - dph (maximum) B	Total developable units = AxB
	9.72	25	243
	27.42	45	1234
	11.49	55	632
Total	48.63		2109

- Outline approved masterplan dwelling yield:
Circa 2481 units at maximum density parameters
- Dwelling loss due to banking buffer of the existing vegetation NOT included in approved masterplan (5.32Ha):
circa 229 units at maximum density parameters.
- Dwelling loss - Revised FRA Addendum (3.53Ha):
circa 143 units at maximum density parameters
- Masterplan dwelling yield:
circa 2109 units at maximum density parameters.

- Reference Documents:**
- Refer to Hydrock 22006-HYD-P0-XX-DR-C-2220-Strategic Site Wide Surface Water Drainage Strategy-P07 CAD Plans:
 - 22006-HYD-P0-XX-C-M2-0002_SW Drainage Strategy Option 2.dwg
 - 22006-HYD-P0-XX-DR-C-2600-P04 Site Wide Constraints Plan.dwg
 - Refer to Thrive Architects plan COUN220525 DPO 03.P8